

Copyright

© 1994-1998 Globetrotter Software, Inc
All Rights Reserved.

Globetrotter Software products contain certain confidential information of Globetrotter Software, Inc. Use of this copyright notice is precautionary and does not imply publication or disclosure. No part of this publication may be reproduced, transmitted, transcribed, stored in a retrieval system, or translated into any language in any form by any means without the written permission of Globetrotter Software, Inc.

Trademarks

GLOBE*trotter* and FLEX*lm* are registered trademarks of Globetrotter Software, Inc. "Electronic Commerce for Software", "Electronic Licensing", FLEX*admin*, FLEX*crypt*, FLEX*express*, FLEX*id*, FLEX*meter*, FLEX*wrap*, GLOBE*forms*, GLOBE*help*, GLOBE*support*, GLOBE*track*, Globetrotter Software, "No Excuses Licensing", "Policy in the License" and the tilted compass image are all trademarks of Globetrotter Software, Inc. All other brand and product names mentioned herein are the trademarks and registered trademarks of their respective owners.

Restricted Rights Legend

Use, duplication, or disclosure by the government is subject to restrictions as set forth in subparagraph (c)(1)(ii) of the Rights of Technical Data and Computer Software clause at DFARS 252.227-0713 and FAR52.227-19 and/or applicable Federal Acquisition Regulation protecting the commercial ownership rights of independently developed commercial software.

Printed in the USA.

May, 1998

Contents

Preface

Welcome to FLEXlm	v
Versions of FLEXlm	v
How to Use This Manual	v
Related Documents from GLOBEtrouter Software	vi

Chapter 1

Introduction and Overview	1
1.1 Introduction to FLEXlm	1
1.1.1 FLEXlm Components	1
<i>The License Manager Daemon (lmgrd)</i>	1
<i>The Vendor Daemon</i>	2
<i>The License File</i>	2
<i>The Application Program</i>	3
1.1.2 The License Request Process	3
1.1.3 Configuring FLEXlm	3
1.2 Getting Started Checklist	4
1.2.1 Installing Licensed Software	4
<i>License Servers and Hostids</i>	5
<i>lmgrd and License Files</i>	5
<i>Administration Tools</i>	5
<i>Options Files</i>	5
1.2.2 Notes for End-Users	5
<i>How to Specify a License File</i>	6
<i>Getting Information About Licenses</i>	6

Chapter 2

The License File	7
2.1 Specifying Location of the License File	7
2.1.1 Setting the Path to the License File at Start-Up (Unix)	8
2.1.2 Setting the Path to the License File at Start-Up (Windows)	9
2.1.3 Setting the Path with an Environment Variable	9
2.2 License File Format	10
2.2.1 SERVER Lines	11
2.2.2 DAEMON (or VENDOR) Lines	11
2.2.3 USE_SERVER line (v5+ only)	12
2.2.4 FEATURE or INCREMENT Lines	13
2.2.5 FEATURESET Lines	16
2.2.6 PACKAGE Lines	16
2.2.7 UPGRADE Lines	18

2.3	Sample License File	18
2.4	Types of License Files	19
2.4.1	Floating (Concurrent) Licenses	19
2.4.2	Node Locked Licenses	19
2.4.3	Mixed Node Locked and Floating Licenses	20
2.5	Decimal Format	20

Chapter 3

Multiple License Files 21

3.1	Overview of Combining License Files	21
3.1.1	Combining License Files from Multiple Vendors	22
3.1.2	FLEXlm Version Component Compatibility	22
3.1.3	Using Separate License Files on the Same Server Node	23
3.2	Using LM_LICENSE_FILE License File List	23

Chapter 4

Selecting Server Nodes 25

4.1	Resources Used by the Server	25
4.1.1	Sockets	25
4.1.2	CPU Time	25
4.1.3	Disk Space	26
	<i>Switching output of the debug log file on UNIX systems</i>	26
4.1.4	Memory	26
4.1.5	Network Bandwidth	27
4.2	Remote Mounted Disks	27
4.3	Redundant Servers	27
4.3.1	Three-Server redundancy	28
	<i>Selecting Server Nodes</i>	28
4.3.2	Redundancy via License File List in \$LM_LICENSE_FILE	28
4.3.3	Comparing Three-Server to License File List	29
	<i>Are there any drawbacks to using the license file list for redundancy?</i>	29
	<i>When is it recommended to use a license file list for redundancy rather than true redundant servers?</i>	29
4.4	Counted vs. Uncounted Licenses	29

Chapter 5

The Options File 31

5.1	Creating an Options File	31
5.2	Customizing the Options File	31
	<i>Featurename specification</i>	32
5.2.1	EXCLUDE	33
5.2.2	EXCLUDEALL	33
5.2.3	GROUP	33
5.2.4	HOST_GROUP	33
5.2.5	INCLUDE	34
5.2.6	INCLUDEALL	34
5.2.7	LINGER	34
5.2.8	MAX	35
5.2.9	MAX_OVERDRAFT	35

5.2.10	NOLOG	35
5.2.11	REPORTLOG	35
	<i>LM_PROJECT</i>	36
5.2.12	RESERVE	36
5.2.13	TIMEOUT	36
5.3	TIMEOUTALL	37
5.4	Understanding Options Files	37
5.4.1	How the Vendor Daemon Uses the Options File	37
5.4.2	Rules of Precedence in Options Files	37
5.4.3	Simple Options File Example	38
5.4.4	Limiting Access for Multiple Users	38
5.4.5	EXCLUDE Example	39
5.4.6	INCLUDE Example	40

Chapter 6

License Administration Tools 41

	<i>Arguments valid for all lmutil utilities</i>	41
6.1	lmcksum	42
6.2	lmdiag	42
6.3	lmdown	43
6.4	lmgrd	44
6.5	lmhostid	45
6.6	lminstall	45
	<i>lminstall As A Conversion Tool:</i>	45
6.7	lmremove	46
6.8	lmreread	47
6.9	lmstat	47
6.10	lmswitch	48
6.11	lmswitchr	48
6.12	lmver	49
6.13	License Administration Tools for Windows	49
6.13.1	License Administration Tools—LMTOOLS for Windows	49
6.13.2	The FLEXlm Control Panel	49
6.13.3	Controlling LMGRD with the Windows Control Panel	50
6.13.4	Using The Control Panel on NT	50
6.13.5	Using the Control Panel on Windows 95	51

Appendix A

Hostids for FLEXlm-Supported Machines 53

A.1	Hostid Table	53
-----	--------------	----

Appendix B

Troubleshooting Guide 55

B.1	General Debugging Hints	55
B.2	FLEXLM_DIAGNOSTICS	56
B.3	FLEXlm Troubleshooting List	57
B.4	Other Client Problems	59
B.5	Other Server Problems	59

Appendix C		
	Frequently Asked Questions	61
C.1	License File Questions	61
C.2	FLEXlm Versions	61
C.3	Using FLEXlm	62
C.4	Windows Questions	65
Appendix D		
	FLEXlm Error Codes	67
D.1	Error Message Format	67
D.2	Error Code Descriptions	68
Appendix E		
	The Debug Log File	73
E.1	Informational Messages	73
E.2	Configuration Problem Messages	75
E.3	Daemon Software Error Messages	76
Appendix F		
	FLEXlm Versions	77
Index	81

Welcome to FLEXlm

FLEXlm[®] is the de facto standard network license manager used by over 1500 leading software vendors to control the use of their software products. If you are a system administrator or user, chances are one or more of the products currently on your network is licensed by FLEXlm.

This manual explains FLEXlm from an end-user standpoint and how to use the command-line tools which are part of the standard FLEXlm distribution kit. GLOBEtrouter Software also provides the FLEXadmin[™] asset management tool for more advanced license server control and reporting. Please contact GLOBEtrouter Software (info@globes.com) for more information about FLEXadmin.

Keep in mind that certain topics (such as password encryption) are vendor-specific and proprietary so we cannot document them in any detail. Also, because FLEXlm does not enforce a particular licensing strategy, each vendor's implementation can have subtle differences. If you do not find out what you need to know here, you should contact your vendor's technical support group.

Versions of FLEXlm

This manual covers features of interest to license administrators and end-users in FLEXlm versions 1.0 through 6.0.

How to Use This Manual

This manual is written for two different audiences: the license administrator and the end user.

License Administrator

If you are a license administrator, read these chapters:

This chapter:	Explains:
Introduction and Overview	FLEXlm basics: license and vendor daemons; the license file; configuring FLEXlm; the license request process.
The License File	The license file format; setting the path at start-up; different types of licensing policies.
Multiple License Files	Using license files from independent software vendors.

This chapter:	Explains:
Selecting Server Nodes	Selecting which machines will run the license servers, resources required by the servers, multiple servers, quorums, and redundant servers.
The Options File	Creating and editing the options file.
License Administration Tools	Managing <i>FLEXlm</i> using <i>GLOBEtrotter</i> -supplied utilities.

In addition, you can refer to Appendix B, “Troubleshooting Guide” on page 55, which contains a list of common problems and their solutions and Appendix C, “Frequently Asked Questions” on page 61.

End User

If you are an end user, read these chapters:

This chapter:	Explains:
Introduction and Overview	<i>FLEXlm</i> basics: license and vendor daemons; the license file; configuring <i>FLEXlm</i> ; the license request process.
The License File	The license file format; setting the path at start-up; different types of licensing policies.

In addition, you can refer to Appendix B, “Troubleshooting Guide” on page 55, which contains a list of common problems and their solutions.

Related Documents from GLOBEtrotter Software

FLEXadmin[™] / *FLEXwrap*[™] *Users Guide* - describes both the *FLEXadmin* license administration tools for managing *FLEXlm*-enabled applications, and *FLEXwrap* for administrators who wish to provide license management for applications shipped without embedded license management.

FLEXlm Programmers Guide and *FLEXlm Reference Manual* - for programmers responsible for incorporating *FLEXlm* into their products.

Introduction and Overview

This chapter explains the basics of floating (network) licensing, and gives a quick overview of the components of FLEXlm. It explains where license administrators have control and where end-users have control. A section called “Getting Started Checklist” on page 4 tells both license administrators and end-users how to start managing FLEXlm.

1.1 Introduction to FLEXlm

FLEXlm is the most popular license manager used in the software industry. FLEXlm is best known for its ability to allow software licenses to be available (or float) anywhere on a network, instead of being tied to specific machines. Floating licensing benefits both users and license administrators. Users can make more efficient use of fewer licenses by sharing them on the network. License administrators can control who uses the licensed application, and the node(s) where the licenses will be available. See Section 2.4, “Types of License Files,” on page 19 for details about the different licensing models supported by FLEXlm.

1.1.1 FLEXlm Components

The four main components of FLEXlm are:

- license manager daemon
- vendor daemon
- license file
- application program

THE LICENSE MANAGER DAEMON (*LMGRD*)

The *license manager daemon (lmgrd)* handles the initial contact with the client application programs, passing the connection on to the appropriate vendor daemon. It also starts and restarts the vendor daemons. FLEXlm permits multiple redundant license manager daemons on three server nodes, allowing you to make your license available if any two out of the three server nodes is running. Redundancy can be achieved with 3-server redundant servers, or by using a license file list with any number of servers.

Note—*lmgrd* is not present on VMS or Netware systems.

THE VENDOR DAEMON

In *FLEXlm*, licenses are granted by running processes (unless they're node locked, uncounted, in which case they need only read the license file to run). There is one process for each vendor who has a *FLEXlm*-licensed product on the network. This process is called the *vendor daemon*. The vendor daemon keeps track of how many licenses are checked out, and who has them. If the vendor daemon terminates for any reason, all users lose their licenses (though this does not mean the applications suddenly stop running). Users normally regain their license automatically when *lmgrd* restarts the vendor daemon, though they may exit if the vendor daemon remains unavailable.

Client programs communicate with the vendor daemon, usually through TCP/IP network communications. The client application and the daemon processes (the license server) can run on separate nodes on your network, across any size wide-area network. Also, the format of the traffic between the client and the vendor daemon is machine-independent, allowing for heterogenous networks. This means the license server and the computer running an application can be either different hardware platforms or even different operating systems (Windows and Unix, for example).

THE LICENSE FILE

Licensing data is stored in a text file called the license file. The license file is created by the software vendor, and edited and installed by the license administrator. It contains information about the server nodes and vendor daemons, and at least one line of data (called FEATURE or INCREMENT lines) for each licensed product. Each FEATURE line contains a license key based on the data in that line, the hostids specified in the SERVER lines, and other vendor-specific data.

In some environments, the licensing information for several vendors may be combined into a single license file. The default location is:

```
/usr/local/flexlm/licenses/license.dat (Unix)
C:\flexlm\license.dat (Windows, Windows/NT, OS/2)
SYS$COMMON:[SYSMGR]flexlm.dat (VMS)
SYS:\SYSTEM\flexlm\license.dat (Netware)
```

End-users can usually override this location by setting the environment variable `LM_LICENSE_FILE` to point elsewhere, or by following instructions supplied with the licensed application. If your site has software from multiple vendors with incompatible license files (due to different sets of servers), you can keep the data in separate files and set the `LM_LICENSE_FILE` variable to reference multiple files.

Note—The default location should be used with caution: setting `LM_LICENSE_FILE` may actually cause applications to fail if their license is located in the default location, but that location is not included in `LM_LICENSE_FILE`. This is because setting `LM_LICENSE_FILE` removes the default location from the license file list.

It's strongly recommended that you keep a copy or link (on Unix) of the license file in the vendor's "default" location, so that users will not need to set `LM_LICENSE_FILE` to run their applications. For details, see Chapter 2, "The License File" on page 7.

THE APPLICATION PROGRAM

The application program using FLEXlm is linked with the program module (called the FLEXlm client library) that provides the communication with the license server. On Windows, this module is called `LMGRxxx.DLL`, where `xxx` indicates the FLEXlm version. During execution, the application program communicates with the vendor daemon to request a license.

1.1.2 The License Request Process

When you run a "counted" FLEXlm-licensed application the following occurs:

1. The license module in the client application finds the license file, which includes the host name of the license server node and port number of the license manager daemon, *lmgrd*.
2. The client establishes a connection with the license manager daemon (*lmgrd*) and tells it what vendor daemon it needs to talk to.
3. *lmgrd* determines which machine and port correspond to the master vendor daemon and sends that information back to the client.
4. The client establishes a connection with the specified vendor daemon and sends its request for a license.
5. The vendor daemon checks in its memory to see if any licenses are available and sends a grant or denial back to the client.
6. The license module in the application grants or denies use of the feature, as appropriate.

"Uncounted" features (where the number of licenses is '0') do not require a server, and the FLEXlm client library routines in the application grant or deny usage based solely upon the license contents.

1.1.3 Configuring FLEXlm

Most of the parameters of FLEXlm are configurable by the license administrator. The license administrator can set:

- the location of the license file (though it's recommended that a copy or link of the license remains at the location where the application expects it)
- the location of all executables
- the location of all log files
- the TCP/IP port number used by the license manager process, *lmgrd*.

In addition, the license administrator can reserve licenses for specific users, nodes, or groups, and control other license-related options. Changing parameters is discussed in Chapter 5, “The Options File” on page 31.

Note—Refer to your vendor’s documentation before attempting to change file names, locations, or contents.

1.2 Getting Started Checklist

The following sections provide a quick overview of how to set up and use licensing for FLEXlm-licensed products. By scanning the list, you should be able to quickly find the areas of interest. Cross-references point to more details in other parts of this manual.

1.2.1 Installing Licensed Software

As a license administrator you are responsible for setting up licensing on your system or network. This section tells you how to do that. If you are an end-user of the application and you will not be involved in installing it, then go to Section 1.2.2, “Notes for End-Users,” on page 5.

Remember that the installation guide for your application software is the final word on installing and configuring FLEXlm. Generally, however, installing FLEXlm licensing requires the following steps:

1. Select your license server nodes and get their hostids. See Appendix A, “Hostids for FLEXlm-Supported Machines”.
2. Give the hostids to your software vendor and get a license file (or the data to enter in the license file) in return.
3. Consider combining the new license file with any existing license files. See Chapter 3, “Multiple License Files” on page 21.
4. Determine if an options file is desired, and if so, set it up.
5. Determine where to install the FLEXlm utility programs such as *lmgrd*, and *lmutil* (*lmstat*/*lmdown*/etc.) and install them unless the your vendor’s installation script does so for you.
6. Start *lmgrd* (the license daemon) manually; you may also want to set it up to start automatically at boot time. See Section 2.1.1, “Setting the Path to the License File at Start-Up (Unix),” on page 8.

These steps are discussed briefly below, with cross-references to the appropriate locations for more detail.

LICENSE SERVERS AND HOSTIDS

Before running any FLEXlm-licensed program using floating licenses, you will need to set up your license server node (or nodes). You must select which node or nodes to run your license servers on, and provide the hostid of those machines to your software vendor. For pointers on selecting your server machine, see Chapter 4, “Selecting Server Nodes” on page 25.

You can get the hostid of the server machine by running FLEXlm’s `lmhostid` utility on that machine. If you don’t have `lmhostid`, you can get the hostid of your machine by using the appropriate command as described in Appendix A, “Hostids for FLEXlm-Supported Machines”.

Using the hostid of your server machines your vendor will send you a license file that enables their application software.

LMGRD AND LICENSE FILES

Once you have received a license file from your vendor, you must install it on your system and start up the license manager daemon, *lmgrd*.

- Your software vendor may have selected a default location for your license file. If not, you can use any location you wish. For more details, see Chapter 2, “The License File” on page 7.
- To start *lmgrd* automatically at boot time, you will have to modify your system files (Unix), or use the FLEXlm Control Panel (Windows). For details see Section 2.1.1, “Setting the Path to the License File at Start-Up (Unix),” on page 8.

ADMINISTRATION TOOLS

GLOBEtrouter Software supplies administration tools to your software vendor. The vendor usually includes them with their product. The recommended location for the tools is `/usr/local/bin` (Unix), `C:\flexlm` (Windows), or `SYS$COMMON:[SYSMGR]` (VMS), but you can install them in a different location (or not at all). See Chapter 6, “License Administration Tools” on page 41 for more information.

OPTIONS FILES

The options file controls various options such as reservations and timeouts of licenses. Most users run without an options file, but you may decide you want to use some options. For example, many administrators use an option to limit the quantity and content of logged messages. To set up an options file, see Chapter 5, “The Options File” on page 31.

1.2.2 Notes for End-Users

As a user of a FLEXlm-licensed application, you may need to know a few things to use the system effectively. The main things you need to know are:

- How to tell an application which license file to use.
- How to query the system to find out who is using a license.

HOW TO SPECIFY A LICENSE FILE

The license file determines what features are available to a program. It also contains information telling the application how to connect to the license server.

For information about the standard way of specifying a license file for an application, see Chapter 2, “The License File” on page 7.

GETTING INFORMATION ABOUT LICENSES

To find out who is using a license run `lmstat`, described in Chapter 6, “License Administration Tools” on page 41.

The License File

The license file contains all site-specific information required by FLEXlm. This information includes:

- server names and hostids
- vendor names and paths to vendor daemon executables
- feature information

In general, the license file, or a copy of it, must be accessible to every machine that runs a FLEXlm-licensed application, and each machine designated as a license server. Before you can use the application you have to start the license manager daemon (*lmgrd*) using the following syntax:

```
lmgrd [-c license_file_path] (Unix and OS/2)
lmgrd -app [-c license_file_path] (Windows/NT)
```

where:

is the:

-c license_file_path full pathname to the license file. Otherwise, LM_LICENSE_FILE is used, or the default location: /usr/local/flexlm/licenses/license.dat (Unix) or C:\flexlm\license.dat (Windows).

Note—On VMS and Netware systems there is no *lmgrd* and the vendor daemon is run directly.

2.1 Specifying Location of the License File

If your software vendor recommends a specific location for your license file, or if the default is not practical for you, use one of the following methods to put the license file in another location:

- set the path when you start *lmgrd* with “*-c path*”
- set the path with the LM_LICENSE_FILE environment variable

If you are running the application on multiple nodes, you have three options for making your license file available on all the machines:

- Place the license file in a partition which is available (via NFS on Unix systems) to all nodes in the network that need the license file.
- Copy the license file to all of the nodes where it is needed.
- Set LM_LICENSE_FILE to “*port@host*”, where *host* and *port* come from the SERVER line in the license file.

- Starting with FLEXlm v6, you can use “@host”, if the license file SERVER line uses a default port, or specifies a port in the default port range (27000-27009).

Since the vendor daemon keeps track of license usage, and since the license file contains encrypted data to protect it against modification, you may move and copy the license file as much as necessary.

No matter which option you choose, you must first install *lmgrd* (on Unix and Windows/NT systems) and the vendor daemon.

With a FLEXlm v6 (or later) vendor daemon and *lmgrd*, the license path can be a list of files, separated by colons on Unix, or semi-colons on Windows. If there is a directory in this list, all files named *.lic in that directory are used.

Note—You can only start *lmgrd* on the server node specified in the license file.

Note—If you are running redundant servers, you should have separate copies of the license file (as well as the binaries for *lmgrd* and the vendor daemons) on *each* server node. If you do not do this, you lose all the advantages of having redundant servers, since the file server holding these files becomes a single point of failure.

2.1.1 Setting the Path to the License File at Start-Up (Unix)

To start the license manager daemon (*lmgrd*) execute a command similar to the following.

If you are running in the C shell:

```
% lmgrd_path -c license_file_path >& log_path &
```

If you are using either the Korn or Bourne shell:

```
$ nohup lmgrd_path -c license_file_path > log_path 2>&1 &
```

On Unix, edit the appropriate boot script, which may be */etc/rc.boot*, */etc/rc.local*, */etc/rc2.d/Sxxx*, */sbin/rc2.d/Sxxxx*, etc. Remember that these scripts are run in */bin/sh*, so do not use the *csh* “>&” redirection syntax.

Each Unix operating system can have some quirks in doing this, but the following script has been successfully tested for HP700 systems. See the notes following for a full explanation.

```
/bin/su daniel -c 'echo starting lmgrd > \
/home/flexlm/v5.12/hp700_u9/boot.log'

/bin/nohup /bin/su daniel -c 'umask 022; \
/home/flexlm/v5.12/hp700_u9/lmgrd -c \
/home/flexlm/v5.12/hp700_u9/license.dat >> \
/home/flexlm/v5.12/hp700_u9/boot.log'

/bin/su daniel -c 'echo sleep 5 >> \
/home/flexlm/v5.12/hp700_u9/boot.log'
/bin/sleep 5
```

```

/bin/su daniel -c 'echo lmdiag >>\
/home/flexlm/v5.12/hp700_u9/boot.log'

/bin/su daniel -c '/home/flexlm/v5.12/hp700_u9/lmdiag -n -c\
/home/flexlm/v5.12/hp700_u9/license.dat >> \
/home/flexlm/v5.12/hp700_u9/boot.log'

/bin/su daniel -c 'echo exiting >>\
/home/flexlm/v5.12/hp700_u9/boot.log'

```

Please note the following about how this script was written:

- All paths are specified in full, since no paths can be assumed at boot time.
- Since no paths are assumed, the vendor daemon must be in the same directory as `lmgrd`, or the `VENDOR` lines must be edited to include the full path to the vendor-daemon binary file.
- The “su” command is used to run `lmgrd` as a non-root user, “daniel”. We recommend that `lmgrd` not be run as root, since it can be a security risk to run any program that does not require root permissions, and `lmgrd` does not require root permissions.
- Daniel has a `cs` login, so all commands executed as `daniel` must be in `cs` syntax. All commands not executed as `daniel` must be in `/bin/sh` syntax, since that’s what’s used by the boot scripts.
- The use of “nohup” and “sleep” are required on some operating systems, notably HPUX and Digital Unix, for obscure technical reasons. These are not needed on Solaris and some other operating systems, but are safe to use on all.
- `lmdiag` is used as a diagnostic tool to verify that the server is running and serving licenses.

Note—On IBM RS6000 systems, `/etc/rc` cannot be used, because TCP/IP is not installed when this script is run. Instead, `/etc/inittab` must be used. Add a line like this to `/etc/inittab` after the lines which start networking:

```
rclocal:2:wait:/etc/rc.local > /dev/console 2>&1
```

Note—This will not start the daemon until you reboot your license server machine.

2.1.2 Setting the Path to the License File at Start-Up (Windows)

This is set with the `FLEXlm` Control Panel. See Section 6.13.2, “The `FLEXlm` Control Panel,” on page 49.

2.1.3 Setting the Path with an Environment Variable

Use the environment variable `LM_LICENSE_FILE` to set the location of the license file. For example in the C shell:

```
% setenv LM_LICENSE_FILE license_file_path
```

In the Korn and Bourne shells:


```
# LM_LICENSE_FILE=license_file_path
# export LM_LICENSE_FILE
```

On Windows 3.1 and 95, add the following line to C:\autoexec.bat:

```
SET LM_LICENSE_FILE=license_file_path
```

On Windows NT, use the System Control Panel applet to change the global environment, adding LM_LICENSE_FILE to *license_file_path*

where:

license_file_path

is the:

full pathname to the license file. This can also be a *port@host* setting, where *port* and *host* are the port number and hostnames from the SERVER line in the license file.

In FLEXlm v6.0, applications will accept an environment variable (or Windows Registry) named “VENDOR_LICENSE_FILE”, where *VENDOR* is the vendor-daemon name, e.g., GSI_LICENSE_FILE.

Note—The “-c” option overrides the setting of the LM_LICENSE_FILE environment variable for *lmgrd* and other FLEXlm utilities like *lmstat* and *lmdown*. See Section 3.1.3, “Using Separate License Files on the Same Server Node,” on page 23 for more information about LM_LICENSE_FILE.

Note—Some applications do not recognize the LM_LICENSE_FILE environment variable.

2.2 License File Format

License files usually begin with a SERVER line (or three lines for redundant servers) followed by one or more DAEMON lines, followed by one or more FEATURE or INCREMENT lines. In some cases the license file requires no SERVER line and no DAEMON line. See Section 4.4, “Counted vs. Uncounted Licenses,” on page 29, for more information. Since FLEXlm v6.0, the DAEMON line can be called VENDOR. Wherever DAEMON appears, VENDOR can be used, if the *lmgrd* and *vendor-daemon* are both >= FLEXlm v6.0.

You can modify these data items in the license file:

- node names on the SERVER line(s)
- port numbers on SERVER line(s)
- pathnames on the DAEMON line(s)
- options file pathnames on DAEMON line(s)
- Optional port numbers on DAEMON line(s) (for firewall support only)
- USE_SERVER line (FLEXlm v5 and later only)
- values in “*name=value*” pairs on FEATURE lines, if *name* is all lowercase

Note—Everything else is used to compute the license key, and should be entered exactly as supplied by your software vendor. All data in the license file is case sensitive, unless otherwise indicated.

In the following sections, options modifiable by the license administrator are *italicized*.

2.2.1 SERVER Lines

The SERVER line specifies the node name and hostid of the license server, and the port number of the license manager daemon (*lmgrd*). Normally a license file has one SERVER line. Three SERVER lines mean that you are using redundant servers. The absence of a SERVER line means every FEATURE or INCREMENT line in the license file is uncounted. For more information about uncounted features, see Section 2.2.4, “FEATURE or INCREMENT Lines,” on page 13. License administrators do not have the option of deleting SERVER lines from a license file because the hostids from the SERVER lines are computed into the license keys on every FEATURE and INCREMENT line. For more information about redundant servers, see Chapter 4, “Selecting Server Nodes” on page 25.

The format of the SERVER line is:

```
SERVER nodename id port-number
```

where:

is the:

nodename (or IP-address) The system hostname. String returned by the UNIX *hostname* or *uname -n* command. On NT, *ipconfig /all*; on Win95, *winipcfg /all* return the hostname. If the application uses FLEXlm v5 or higher, this can be an IP-address (in *nnn.nnn.nnn.nnn* format).

id Usually the string returned by the *lmhostid* command. This can only be changed by your software supplier.

port-number TCP port number to use. A valid number is any unused port number between 0 and 64000. On Unix choose a port >1024, since <1024 are privileged port numbers.

Example:

```
SERVER enterprise 0122345 21987
```

2.2.2 DAEMON (or VENDOR) Lines

The DAEMON line specifies the daemon name and path. *lmgrd* uses this line to start the vendor daemons, and the vendor daemon reads it to find the options file. The format of the DAEMON line is shown below.

Note—Since FLEXlm v6.0, the DAEMON line can be called VENDOR. VENDOR can be used if the *lmgrd* and *vendor-daemon* are both at least FLEXlm v6.0.

```
{DAEMON|VENDOR} daemon_name [daemon_path] [[options=]options_path]\
[[port=]portnum]
```

where:*daemon_name***is the:**

name of the vendor daemon used to serve some feature(s) in the file. This name cannot be changed by the administrator.

daemon_path

pathname to the executable for this daemon. Generally the license administrator is free to install the daemon in any directory. (It is recommended however, that it be installed in a local directory on the license server node.)
If the *lmgrd* and *vendor-daemon* are \geq *FLEXlm* v6.0, this path is optional. If left out, *lmgrd* will look for the *vendor-daemon* binary in the current directory, the *\$PATH* list, or in the directory where *lmgrd* is located. If the path is blank, then the *options=* and *port=* strings are required if options or port number are specified.

options_path

full pathname of the end-user specified options file for this daemon. (See Chapter 5, “The Options File” on page 31.) *FLEXlm* does not require an options file. The keyword “*options=*” requires a v5+ vendor daemon.
If the vendor daemon is *FLEXlm* v6 or later, the options file need not be specified on this line. If it is called *vendor.opt* (where *vendor* is the vendor-daemon name) and located in the same directory as the license file, the vendor daemon will automatically find and use it.

portnum

Vendor daemon port number. NOTE: This is for firewall support only, and is otherwise not recommended. This requires a v5+ *lmgrd*.

Examples:

v6.0:

VENDOR sampled

pre-v6.0:

DAEMON sampled /usr/local/sampled /usr/local/flexlm/licenses/sampled.opt

Note—Versions of *FLEXlm* prior to v3.0 did not support the line continuation character (“\”). Previous versions required that each line in the license file fit on a single line.

2.2.3 USE_SERVER line (v5+ only)

USE_SERVER takes no arguments, and has no impact on the server. When the application sees *USE_SERVER*, it ignores everything in the license file except preceding *SERVER* lines, and the checkout validation occurs at the vendor daemon.

USE_SERVER is recommended since it improves performance when a license server is used. For uncounted features, USE_SERVER can be used to force logging of usage by the daemons.

2.2.4 FEATURE or INCREMENT Lines

A FEATURE line describes the license to use a product. An INCREMENT line can be used in place of a FEATURE line, as well as to “incrementally” add licenses to a prior FEATURE or INCREMENT line in the license file.

Only the first FEATURE line for a given feature will be processed by the vendor daemon. If you want to have additional copies of the same feature (for example, to have multiple node locked counted features), then you must use multiple INCREMENT lines. INCREMENT lines form license groups based on the feature name, version, and node lock hostid. If the feature name, version, and node lock hostid (and optionally, the vendor string, if the vendor specified this) match a prior INCREMENT or FEATURE line, the new number of licenses is added to the old number. If any of the three do not match, a new group of licenses is created in the vendor daemon, and this group is counted independently from others with the same feature name (called a “license pool”). INCREMENT is not available for pre-v2.61 FLEXlm clients or servers. A FEATURE line does not give an additional number of licenses, whereas an INCREMENT line ALWAYS gives an additional number of licenses.

Note—There is a rarely used option in FLEXlm which causes FEATURE lines to function as INCREMENT lines. This option is called `ls_use_all_feature_lines`. You will have to ask your vendor if they use this option. If they do, then all FEATURE lines behave exactly as INCREMENT lines.

Note—A FEATURE line placed after another FEATURE or INCREMENT line will be ignored (unless `ls_use_all_feature_lines` is set).

The format for the FEATURE line changed in FLEXlm v3.0 and FLEXlm v6.0. The older formats are understood by new clients and servers, but the new formats are more flexible.

v2 format:

```
FEATURE|INCREMENT name vendor ver expdate #lic key "vendor_str" [hostid]
```

v3+ format:

```
FEATURE|INCREMENT name vendor version exp_date #lic key \
[HOSTID=hostid][VENDOR_STRING="vendor-string" ] \
[vendor_info="..."] [dist_info="..."] [user_info="..."] \
[asset_info="..."] [ISSUER="..."] [NOTICE="..."] [ck=nnn] \
[OVERDRAFT=nnn] [DUP_GROUP=NONE|SITE|[UHDV]]
```

Note—Nothing in a FEATURE/INCREMENT line is editable, except for values in the “name=value” pairs where *name* is all lowercase.

where:	is the:
<i>name</i>	name given to the feature by the vendor.
<i>vendor</i>	name of the vendor daemon; also found in the DAEMON line. The specified daemon serves this feature.
<i>version</i>	version of this feature that is supported by this license.
<i>exp_date</i>	expiration date, for example, 7-may-1996. Note: If the year is 0 (or 00, 000, 0000) then the license never expires. Dates before 2000 can be 2- or 4-digit years. After 2000 they must be 4-digit years. The expiration date is fully year-2000 compliant. FLEXlm v6 (or later) applications only: the keyword “ <i>permanent</i> ” can be used instead of the date “1-jan-0”.
<i>#lic</i>	number of concurrent licenses for this feature. If the number of users is set to 0, the licenses for this feature are uncounted and no <i>lmgrd</i> is required but a hostid on the FEATURE line is required. See Section 4.4, “Counted vs. Uncounted Licenses,” on page 29. FLEXlm v6 (or later) applications only: the keyword “ <i>uncounted</i> ” can be used instead of a count of 0.
<i>key</i>	license key for this FEATURE line. Two identical looking FEATURE or INCREMENT lines may have different license keys if the start dates are different.

The following fields are all optional (except for *vendor-string* in the old format). For optional fields of the “name=value” syntax, if the name is lowercase, it can be modified and the license will remain valid.

“ <i>vendor_string</i> ”	vendor-defined string, enclosed in double quotes. This string can contain any characters except a quote.
<i>hostid</i>	string returned by <code>lmhostid</code> . Used only if the feature is to be bound to a particular host, whether its use is counted or not. (Numeric hostids are case insensitive). See Appendix A, “Hostids for FLEXlm-Supported Machines” for more information.

DUP_GROUP=... Duplicate Grouping parameter can be specified in the license in FLEXlm v4.0 and later. The syntax is:

```
DUP_GROUP=NONE | SITE | [ UHDTV ]
U = DUP_USER
H = DUP_HOST
D = DUP_DISPLAY
```

V = DUP_VENDOR_DEF

Any combination of UHDV is allowed, and the DUP_MASK is the OR of the combination. For example “DUP_GROUP=UHD” means the duplicate grouping is (DUP_USER|DUP_HOST|DUP_DISPLAY), so for a user on the same host and display, additional uses of a feature do not consume additional licenses.

HOSTID= <i>hostid</i>	Same as <i>hostid</i> above, but in the name=value pair syntax (FLEXlm v3.0 and later).
HOST_BASED[= <i>n</i>]	Hostnames must be specified in INCLUDE statements in the end-user options file, and the number of hosts is limited to <i>#lic</i> , or the number specified in “= <i>n</i> ”.
ISSUED= <i>dd-mmm-yyyy</i>	Date issued.
ISSUER=”...”	Issuer of the license.
NOTICE=”...”	A field for intellectual property notices.
OVERDRAFT= <i>nnn</i>	FLEXlm v4.0 and later. The OVERDRAFT policy allows your vendor to specify a number of additional licenses which users will be allowed to use, in addition to the licenses they have purchased. This allows your users to not be denied service when in a “temporary overdraft” state. Usage above the licensed limit will be reported by the FLEXadmin reporting tool.
PLATFORMS=”...”	Usage is limited to the listed platforms. (v5.11+ only).
SN= <i>serial_num</i>	Serial number, used to identify INCREMENT lines.
START= <i>dd-mmm-yyyy</i>	Start-date (FLEXlm v6 or later only)
SUPERSEDE[= <i>f1 f2 ...</i> ”	If this appears, all licenses issued before the date specified in ISSUED= are <i>superseded</i> by this line, and become ineffective.
USER_BASED[= <i>n</i>]	Users must be specified in INCLUDE statements in the end-user options file, and the number of users are limited to <i>#lic</i> , or the number specified in “= <i>n</i> ”.
VENDOR_STRING=”...”	Same as “ <i>vendor_string</i> ” above, but in <i>name=value</i> pair syntax.

Note—The following attributes can be changed or deleted by end-users. This is indicated by a lowercase *name*.

asset_info=”...”	Additional information provided by the license administrator for asset management.
------------------	--

<code>ck=nnn</code>	A checksum, useful with the <code>lmcksum</code> utility, which will verify that the license has been entered correctly by the end-user.
<code>dist_info="..."</code>	Additional information provided by the software distributor.
<code>user_info="..."</code>	Additional information provided by the license administrator.
<code>vendor_info="..."</code>	Additional information provided by the software vendor.

Examples:

```
FEATURE xyz_app xyzd 2.300 31-dec-1997 20 1234567890 "xyz"
INCREMENT f1 xyzd 1.000 1-jan-0 5 12345678901234567890 \
HOSTID=INTERNET=195.186.*.* NOTICE="Licensed to XYZ corp"
```

2.2.5 FEATURESET Lines

The FEATURESET line is a rarely used line to prevent FEATURE lines from being added to or removed from the license file. The format of the FEATURESET line is shown below.

```
FEATURESET daemon_name key
```

Note—Nothing in a FEATURESET line can be edited. Use the FEATURESET line exactly as it comes from your vendor.

where:	is the:
<i>daemon_name</i>	name of the vendor daemon.
<i>key</i>	license key for this FEATURESET line. This key encrypts the keys of all features this daemon supports, so no FEATURE/INCREMENT lines can be removed, added, or rearranged in this license file.

Example:

```
FEATURESET sampled 12345678
```

where:	is the:
<code>sampled</code>	name of the vendor daemon
<code>12345678</code>	key generated by the vendor

2.2.6 PACKAGE Lines

The purpose of the PACKAGE line is to support two different licensing needs:

- to license a product SUITE, or
- to provide a more efficient way of distributing a license file that has a large number of features, which largely share the same FEATURE line arguments.

A PACKAGE line, by itself, does not license anything—it requires a matching FEATURE/INCREMENT line to license the whole PACKAGE. A PACKAGE line can be shipped by your software vendor with a product, independent of any licenses. Later, when you purchase a license for that package, one or more corresponding FEATURE/INCREMENT licenses will enable the PACKAGE.

Example:

```
PACKAGE pkg_name vendor pkg_version pkg_key COMPONENTS=pkg_list \
    [ OPTIONS=pkg_options ]
```

where:

pkg_name

vendor

pkg_version

pkg_key

pkg_list

is the:

name of the PACKAGE. The corresponding FEATURE/INCREMENT line must have the same name.

name of the vendor daemon that supports this PACKAGE.

version of the PACKAGE. The enabling FEATURE/ INCREMENT line must have the same version.

20-character license key.

list of components. The format is:

```
feature[:version[:num_lic]]
```

PACKAGEs must consist of at least one COMPONENT. Version and count are optional, and if left out, their values come from the corresponding FEATURE/ INCREMENT line. *num_lic* is only legal if OPTIONS=SUITE is not set—in this case the resulting number of licenses will be *num_lic* on the COMPONENTS line multiplied by the number of licenses in the FEATURE/ INCREMENT line. Examples:

```
COMPONENTS="comp1 comp2 comp3 comp4"
```

```
COMPONENTS="comp1:1.5 comp2 comp3:2.0:4"
```

OPTIONS=SUITE

This is what distinguishes a suite PACKAGE from a PACKAGE used to ease distribution.

With OPTIONS=SUITE, the corresponding FEATURE of the same name as the package name is checked out in addition to the component feature being checked out.

If OPTIONS=SUITE is not set, then the corresponding FEATURE of the same name as the package is removed once the PACKAGE is enabled; and it is not checked out when a component feature is checked out.

Examples

```
PACKAGE suite xyzd 1.0 3B24B2F508CB697641CC\
    COMPONENTS="comp1 comp2" OPTIONS=SUITE
```



```
FEATURE suite xyzd 1.0 1-jan-0 5 4193E6ABCCCB1A3970B3
```

This is a typical SUITE example. There are 2 features: comp1 and comp2, which are each version 1.0, with 5, non-expiring licenses available. When comp1 or comp2 are checked out, “suite” will also be checked out.

```
PACKAGE suite xyzd 1.0 2CBF44FCB9C1E825DC5C COMPONENTS="c1:1.5:2\
c2:3.0:4"
```

```
FEATURE suite xyzd 1.0 1-jan-1999 3 321E78A17EC19AE81A43 SN=123
```

In this example, the component versions override the FEATURE versions, and the number of licenses available for any component is the product of the 3 licenses for suite and the number of licenses for that component. The result is equivalent to:

```
FEATURE c1 xyzd 1.5 1-jan-1999 6 0D3AD5F26BC868D476EC SN=123
```

```
FEATURE c2 xyzd 3.0 1-jan-1999 12 EB16C5AE4A4E0F2961F0 SN=123
```

With FLEXlm v6 (or later) applications only the PACKAGE lines can be stored in a separate file which need never be edited.

2.2.7 UPGRADE Lines

```
UPGRADE name daemon fromversion version exp_date #lic key \
"string" [hostid] ck=nnn
```

All the data is the same as for a FEATURE or INCREMENT line, with the addition of the *fromversion* field. An UPGRADE line removes up to the number of licenses specified from any old version (\geq fromversion) and creates a new version with that same number of licenses.

For example, the two lines:

```
INCREMENT f1 xyzd 1.000 1-jan-1999 5 9BFAC03164EDB7BC0462 ""
```

```
UPGRADE f1 xyzd 1.000 2.000 1-jan-1999 2 1B9A30316207EC8CC0F7 ""
```

would result in 3 licenses of v1.0 of f1 and 2 licenses of v2.0 of f1.

UPGRADE will operate on the most recent FEATURE or INCREMENT line (i.e., closest preceding FEATURE or INCREMENT line) with a version number that is \geq *fromversion*, and $<$ *version*.

Note that UPGRADE does not work for node locked, uncounted licenses before version 6.

2.3 Sample License File

This is an example of a license file for a single vendor with two features.

```
SERVER excellent_server 17007ea8 1700
DAEMON xyzd /etc/xyzd
FEATURE xyz_app1 xyzd 1.000 01-jan-1999 10 1EF890030EABF324 ""
FEATURE xyz_app2 xyzd 1.000 01-jan-1999 10 0784561FE98BA073 ""
```

The license file above would allow the license server `excellent_server` with the hostid `17007ea8` to serve 10 floating licenses for `xyz_app1` and `xyz_app2` to any user on the network.

2.4 Types of License Files

License files are created by the software vendor. License files can specify floating (concurrent) usage, node locked (both “counted” and “uncounted”), and any combination of floating, counted and uncounted.

2.4.1 Floating (Concurrent) Licenses

A *floating license* means anyone on the network can use the licensed software, up to the limit specified in the license file. (Also referred to as *concurrent usage* or *network licensing*.) Floating licenses have no hostids on the individual FEATURE lines. Floating licenses requires an *lmgrd* and a vendor daemon to be running to count the concurrent usage of the licenses.

An example of a license file that provides floating licenses is:

```
SERVER lulu 17001234 1700
DAEMON xyzd /etc/xyzd
FEATURE f1 xyzd 1.00 1-jan-99 2 key1 " "
FEATURE f2 xyzd 1.00 1-jan-99 6 key2 " "
FEATURE f3 xyzd 1.00 1-jan-99 1 key3 " "
```

This license file specifies that two licenses for feature “f1”, six licenses for feature “f2”, and one license for feature “f3” are available anywhere on the network that can access the license server “lulu”.

2.4.2 Node Locked Licenses

Node locking means the licensed software can only be used on one node. A node locked license has a hostid on any FEATURE line that is node locked to a particular host. There are two types of node locked licenses; *uncounted* and *counted*.

If the number of licenses is set to 0, then the license is *uncounted* and *unlimited* use is permitted on the specified node. This configuration does not require an *lmgrd* or a vendor daemon because it is not going to count the concurrent usage of the features.

The following license file allows unlimited usage of feature “f1” on the nodes with hostids of 12001234 and 1700ab12:

```
FEATURE f1 xyzd 1.000 1-jan-99 0 key1 " " 12001234
FEATURE f1 xyzd 1.000 1-jan-99 0 key2 " " 1700ab12
```

Alternately, in *FLEXlm* v5.0 or later, these 2 FEATURE lines could have been issued by your software vendor with a *hostid list*:

```
FEATURE f1 xyzd 1.000 1-jan-99 0 key HOSTID="12001234 1700ab12"
```

If these were the only FEATURE lines in this license file, no *lmgrd* daemon would be necessary and you should not start one.

The following license file allows three licenses for feature “f1” to be run, but only on the node with hostid 1300ab43. (In this case, the daemons should be run on the same node that runs the software, since there is no reason to run the daemons on another node.)

```
SERVER lulu 1300ab43 1700
DAEMON xyzd /etc/xyzy
FEATURE f1 xyzd 1.00 1-jan-99 3 key " 1300ab43
```

2.4.3 Mixed Node Locked and Floating Licenses

Uncounted node locked and concurrent usage licenses can be mixed in the same license file.

The following license file allows unlimited use of feature “f1” on nodes 17001111 and 17002222, while allowing two other licenses for feature “f1” to be used anywhere else on the network:

```
SERVER lulu 17001234 1700
DAEMON xyzd C:\flexlm\xyzd.exe
FEATURE f1 xyzd 1.00 1-jan-1999 0 key1 " 17001111
FEATURE f1 xyzd 1.00 1-jan-1999 0 key2 " 17002222
FEATURE f1 xyzd 1.00 1-jan-1999 2 key3 "
```

This configuration requires an *lmgrd* and a vendor daemon because the concurrent usage of the two licenses on the third FEATURE line are counted.

2.5 Decimal Format

The decimal format was introduced in v6. Users with older products can still use the decimal format, but they will require a copy of the v6 *lminstall* command (which is part of *lmutil*). The *lminstall* utility allows the user to type in a decimal line, which is then converted to the readable format, and saved in the specified location. The mixed node-locked floating example above looks as follows in decimal format:

```
xyzd-f1-01761-55296-37046-04544-00017-06551-18072-57346-18754-136
xyzd-f1-01761-55296-37046-08896-00034-235
xyzd-f1-00481-55296-17590-2
```

A simple demo license in readable format

```
FEATURE f1 xyzd 1.00 1-jan-1999 0 key1 HOSTID=DEMO
```

converted to decimal:

```
xyzd-f1-00737-55296-1825
```

Note that by default *lminstall* converts to v6 format. It can convert to a format compatible with older versions by using *lminstall -overfmt 2* (or 3, 4, 5 depending on the *FLEXlm* version).

Multiple License Files

Since more than 1500 vendors have chosen FLEXlm as their license manager, chances are good that you will have to administer licenses from more than one vendor or multiple products from the same vendor.

3.1 Overview of Combining License Files

When you are running FLEXlm-licensed products from multiple vendors, you may need to take steps to prevent licensing conflicts during installation. There are three ways you can accomplish this:

- Multiple license server nodes; each running one *lmgrd* and one license file
- One license server node running one *lmgrd* and several license files
- One license server node running multiple *lmgrds* and multiple license files

Note that before version 6, each *lmgrd* could read only a single license file. In the first option mentioned above, you will have more license servers to monitor; in the third option you have only one server but multiple *lmgrds* to administer.

If all applications and vendor daemons are FLEXlm v6 (or later), *lmgrd* can process multiple license files, even when the hostids are different, so long as they refer to the same node.

Your product's license file(s) define the license server(s) by hostname and hostid in the SERVER line(s) in the license file. If the license files for two or more products contain identical hostids on the SERVER line(s), then these files can be combined. If the license files for two products contain different hostids on a SERVER line, then the license servers for those products will be running on different nodes and the license files cannot be combined.

If you have two or more products whose license servers run on the same node (as specified by the SERVER lines in the license files), you may be able to combine the license files into a single license file. If the SERVER lines in those files have identical hostids, then you can combine the files into a single file. If the SERVER lines have different hostids, then you must keep the license files separate.

More precisely, you can combine two license files under the following conditions:

1. The number of SERVER lines in each file is the same.
2. The hostid field of each SERVER line in one file exactly matches the hostid field of each SERVER line in the other file.

Some possible reasons license files may not be compatible are:

- License files are set up to run on different server nodes, so hostids are different.
- One file is set up for single server (has only one SERVER line), the other is set up for redundant servers (has multiple SERVER lines).
- One vendor uses a custom hostid algorithm, so the hostids on the SERVER lines are different even though the files are for the same machine.

If your license files are compatible as described above, then you have the option of combining license files and running a single *lmgrd*, as described below in Section 3.1.1, “Combining License Files from Multiple Vendors,” on page 22. If the license files are not compatible, then you must keep the license files separate and run separate copies of *lmgrd* for each license file, as described in Section 3.1.3, “Using Separate License Files on the Same Server Node,” on page 23.

Note that you are not required to combine compatible license files; you always have the option of running separate *lmgrds*, and there is virtually no performance or system-load penalty for running separate *lmgrd* processes.

3.1.1 Combining License Files from Multiple Vendors

If your license files are compatible, you can combine them with any text editor. To combine license files, read all of the compatible license files into one file, then edit out the extra SERVER lines so that only one set of SERVER lines remains. Write out this data, and you have your combined license file. If you combine license files from multiple vendors, it is a good idea to keep a copy of the combined license file in each vendor’s default license file location. This way, your users can avoid having to set LM_LICENSE_FILE, because each package finds its license information in the default place. On UNIX, you can do this with a symbolic link from each default location to the location of the combined license file.

3.1.2 FLEXlm Version Component Compatibility

When you combine license files for two different FLEXlm-licensed products, it may be the case that those products do not use the same version of FLEXlm. FLEXlm is designed to handle this situation. There are two basic compatibility rules for FLEXlm:

1. A newer *lmgrd* can be used with an older vendor daemon, but a newer vendor daemon might not work properly with an older *lmgrd*.
2. A newer vendor daemon (or *lmgrd*) can be used with an older client program, but a newer client program might not work properly with an older vendor daemon.

From these two compatibility rules come the simple rules for selecting which version of administration tools to use:

1. Always use the newest version of *lmgrd* and the newest version of each vendor daemon.
2. Use the newest FLEXlm utilities.

For specific application programs, you can use either the new or the old version (of course the vendor daemon for that application must be at least as new as the application itself).

3.1.3 Using Separate License Files on the Same Server Node

You must run a separate copy of *lmgrd* for each license file. When you run multiple copies of *lmgrd*, there are two details to remember:

1. The port number on the SERVER line of each license file must be unique. You can use a standard text editor to change the port number in each license file so that they are all different.
2. You must make sure that you are using a compatible version of *lmgrd* when you start it up for a particular license file. This can be done by using an explicit path to *lmgrd*.

When running client programs (such as a licensed application), you can set the LM_LICENSE_FILE environment variable to point to multiple license files. For example, you may have a license file from vendor ABC and a license file from vendor XYZ with incompatible servers. You can place the license file from vendor ABC into:

```
/usr/flexlm/abc.dat
```

and the license file from vendor XYZ into:

```
/usr/flexlm/xyz.dat
```

then set the LM_LICENSE_FILE environment variable to point to both of them. Each name in LM_LICENSE_FILE should be separated by a colon (":") on Unix systems, a semicolon (";") on Windows and Windows/NT systems (in FLEXlm v4.1, a comma was used on Windows and NT), and a space (" ") on VMS systems.

In the C shell:

```
% setenv LM_LICENSE_FILE /usr/flexlm/abc.dat:/usr/flexlm/xyz.dat
```

In the Korn and Bourne shells:

```
# LM_LICENSE_FILE=/usr/flexlm/abc.dat:/usr/flexlm/xyz.dat
# export LM_LICENSE_FILE
```

3.2 Using LM_LICENSE_FILE License File List

If products use different license server nodes, each set of license servers requires separate license files. (When multiple software vendors use the same set of license server nodes, the technique described above in Section 3.1, "Overview of Combining License Files," on page 21 can be used to combine license files.) The resulting (multiple) license files can be installed in convenient locations. On Unix you would set the LM_LICENSE_FILE environment variable as follows:

```
% setenv LM_LICENSE_FILE lfp1:lfp2:...:lfpN
```

Note—Use a colon (":") to separate the license file names on Unix, on Windows and Windows/NT use a semicolon (";"), and on VMS use a space (" ").

where:	is the:
lfpath1	path to the first license file
lfpath2	path to the second license file.
.	
.	
.	
lfpathN	path to the last (Nth) license file

Each application queries each license file in the order it is listed in the `LM_LICENSE_FILE` path. If the license server serving the license file listed in `lfpath1` is unreachable, the other files listed in `LM_LICENSE_FILE` allow a user to obtain a license from another server. *lfpath* can also be "*port@host*", using the port-number and hostname from the `SERVER` line in the license file.

For more information about `LM_LICENSE_FILE` and setting the location of the license file, see Section 2.1, "Specifying Location of the License File," on page 7.

Selecting Server Nodes

This chapter helps you decide which nodes to use as license server nodes.

4.1 Resources Used by the Server

This section discusses the resources used by the license server. When you select a server node, you may need to take into account the system limits on these resources. For small numbers of licenses (under about 100), most of these items should not be a problem on any workstation.

4.1.1 Sockets

When using TCP, a single vendor daemon can support as many users as the per-process system limit for file descriptors, which ranges from 256 on SunOS 4.x to 4000 on DEC Alpha. When no more file descriptors are available to a daemon, additional vendor daemons are spawned to allow for extra file descriptors, though this is not recommended. When using UDP, there is no limit to the number of end-users per vendor daemon process, since they can share a single socket in the vendor daemon (UDP has other drawbacks, and TCP is normally preferred). If there are more than 250 concurrent clients from a SunOS vendor daemon, it may be a good idea to move the server to a different OS, since all other OSs support more file descriptors. If there are more than 1000 concurrent clients being supported by a single vendor daemon, then it's probably good to split the license file into more than one file, from different servers, to lighten the networking traffic (which will require the ISV to agree to issue new licenses). Clients can checkout licenses from multiple servers using a license-file list via `LM_LICENSE_FILE`.

Each client connected to a license server uses one socket. The total number of sockets used by the license server programs is slightly larger than the total number of simultaneous clients.

On SCO systems, the default number of sockets may be set fairly low; if you choose to run a server on such a machine, you may need to reconfigure your kernel to have more sockets.

4.1.2 CPU Time

For small numbers of clients, the license servers use very little CPU time. The servers might have only a few seconds of CPU time after many days.

For a large number of clients (who are each exchanging heartbeat messages with the server), or for high checkout/checkin activity levels (hundreds per second), the amount of CPU time consumed by the server may start to become significant although, even here, CPU usage is normally not high. In this case, you may need to ensure that the server machine you select will have enough CPU cycles to spare.

Note—GLOBE*trotter* Software has rarely encountered a situation where CPU cycles were an issue, except where the vendor daemon ran out of sockets, and spawned another process.

4.1.3 Disk Space

The only output files created by the license servers are the debug and report log files. The report log files are used to generate accurate usage reports by FLEX*admin*. These log files contain one line for each checkout and one line for each checkin. If you have a lot of license activity, these log files will grow very large. You will need to consider where to put these files and how often to delete or prune them. The license administrator can opt not to log messages to the debug log file if disk space is at a premium. See Section 5.2.10, “NOLOG,” on page 35 and Section 5.2.11, “REPORTLOG,” on page 35.

Note that the log files should be local files on the server machine(s) to avoid networking dependencies.

SWITCHING OUTPUT OF THE DEBUG LOG FILE ON UNIX SYSTEMS

On Unix, the debug log file output can be switched after the daemons are running. The technique to do this involves piping the *stdout* of *lmgrd* to a shell script that appends to the file for each line.

This is done as follows:

Instead of the “normal” startup:

```
% lmgrd> LOG
```

Start *lmgrd* this way:

```
% lmgrd | sh -c 'while read line; do echo "$line" >> LOG ; done'
```

With this startup method, the output file “LOG” can be renamed and a new log file will be created. You could even make “LOG” a symbolic link and change the value of the link to switch the log file.

Note—This technique applies to Unix systems only.

4.1.4 Memory

The FLEX*lm* daemons use little memory. On SunOS, *lmgrd* uses approximately 160 kB and the vendor daemons use approximately 180 kB each.

4.1.5 Network Bandwidth

FLEXlm sends relatively small amounts of data across the network. Each transaction, such as a checkout or checkin, is typically satisfied with less than 1Kbyte of data transferred. This means that FLEXlm licensing can be effectively run over slow networks (such as dial-up SLIP lines) for small numbers of clients.

For a large number of clients (hundreds), each of which will be exchanging heartbeat messages with the vendor daemon, the network bandwidth used may start to become significant. In this case you should run client and server on the same local area network, which may require splitting licenses between 2 files for 2 servers. Users can use a license file list in LM_LICENSE_FILE to have effective access to both servers.

In high-traffic networks, with FLEXlm clients older than v5, you may also want to avoid setting LM_LICENSE_FILE to a port@host address. Instead, the license administrator should place a copy of the license file in a filesystem local to the application. See Section 2.1, “Specifying Location of the License File,” on page 7.

4.2 Remote Mounted Disks

GLOBEtrouter Software recommends that you do not use remote mounted disks when you run the license server. In other words, we recommend that *lmgrd*, the vendor daemons, the license file, and the debug and report log files are all on locally mounted disks. If any of these files is on a remote mounted disk, you double the points of failure which could lead to a temporary loss of all of your licenses. When all files are mounted locally, the licenses will be available as long as the server machine is up; but when the files are on a different machine, then the loss of either the license server machine or the file server machine will cause the licenses to be unavailable.

4.3 Redundant Servers

FLEXlm supports two methods of redundancy: A set of three redundant license servers, and redundancy via a license file list in the \$LM_LICENSE_FILE setting.

With three-server redundancy, if any two of the three license servers are up and running, the system is functional and hands out its total complement of licenses (Two out of three license servers is referred to as a “quorum”).

With \$LM_LICENSE_FILE list redundancy, each one of a group of license servers serves a subset of the total licenses. The end-user sets LM_LICENSE_FILE to a list of license files, where each license file refers to one of the license servers. The application then tries each server in the list, in order, until it succeeds or gets to the end of the list.

4.3.1 Three-Server redundancy

SELECTING SERVER NODES

If all the end-user data is on a single file server, then there is no need for redundant servers, and *GLOBEtrotter* Software recommends the use of a single server node for the *FLEXlm* daemons. If the end-user's data is split among two or more server nodes and work is still possible when one of these nodes goes down or off the network, then multiple server nodes can be employed. In all cases, an effort should be made to select stable systems as server nodes; in other words, do not pick systems that are frequently rebooted or shut down for one reason or another. The three server nodes can be any supported server nodes — it is not required that they be the same architecture or operating system.

Three-server redundancy does not provide load-balancing. Use `$LM_LICENSE_FILE` list instead for this type of redundancy. This is because with three-server redundancy, only one of the three servers is “master”, capable of issuing licenses. Since all clients must contact the “master”, all clients must have reliable networking to a single node.

These three-server redundant servers should have excellent communications, and should be on the same subnet. Often this means that the three-servers should be located physically close to each other. This form of redundancy requires that the servers exchange heartbeats periodically, and poor communications can cause poor performance. You should never configure redundant servers with slow communications or dialup links.

4.3.2 Redundancy via License File List in `$LM_LICENSE_FILE`

This is best explained by example. If 10 licenses are desired for both f1 and f2, the ISV would issue 2 sets of licenses with a count of 5 for each of f1 and f2. The server nodes (unlike three-server redundancy) can be physically distant. The license files would look like:

- License 1 for chicago


```
SERVER chicago 17007ea8 1700
DAEMON xyzd /etc/mydaemon
FEATURE f1 xyzd 1.000 01-jan-99 5 26C7DD9CD665B8270186 ""
FEATURE f2 xyzd 1.000 01-jan-99 5 0739D2F78CE46C57041D ""
```
- License 2 for tokyo


```
SERVER tokyo 17007ea8 1700
DAEMON xyzd /etc/mydaemon
FEATURE f1 xyzd 1.000 01-jan-99 5 16BE40E1DAEEEDA8798D ""
FEATURE f2 xyzd 1.000 01-jan-99 5 6DB6F3E40E61885712DF ""
```

The user in Chicago could set `$LM_LICENSE_FILE` to

```
1700@chicago:1700@tokyo
```

the user in Tokyo could set `$LM_LICENSE_FILE` to
`1700@tokyo:1700@chicago`

The application attempts the first server in the list, and if that fails for any reason, the second server is tried.

4.3.3 Comparing Three-Server to License File List

ARE THERE ANY DRAWBACKS TO USING THE LICENSE FILE LIST FOR REDUNDANCY?

Yes. By default, once a *license job* has successfully checked out a license from one host, all subsequent checkouts must be satisfied from the same host. If the application requires more than one FEATURE, this could result in a license denial when the license is available on another server. An application can bypass this restriction if it is coded with the use of multiple *FLEXlm license jobs*. Only your application vendor can tell you if their application is programmed in this manner.

If the application supports license queueing, all licenses are only queued from the first host on the list.

Finally, if one server becomes unavailable, some licenses will be unavailable.

WHEN IS IT RECOMMENDED TO USE A LICENSE FILE LIST FOR REDUNDANCY RATHER THAN TRUE REDUNDANT SERVERS?

- When there's less system administration available to monitor license servers.
- When load-balancing is needed: when clients are located far apart, e.g., London and Tokyo. You can make servers available locally, with remote servers available as backup.
- License-file list is more forgiving if you lose quorum
- It's not limited to 3 servers (any number will work); and for wide-area networks, you can make servers available locally, with remote servers available as backup.
- Clients do not require reliable networking to a single node with license-file list, so this is recommended where networking itself requires redundancy.

4.4 Counted vs. Uncounted Licenses

The license file determines whether a license server is needed. If all the FEATURE (or INCREMENT) lines have a license-count of 0 (unlimited) or "uncounted" (FLEXlm v6 or later only), then no server is needed. This type of license is called *uncounted*. Alternatively, if any FEATURE lines have a non-zero license-count, then a server is required to count those licenses. If a vendor wants to use FLEXlm without a server, they must issue *uncounted* licenses.

With FLEXlm v5 or later, the license server can serve uncounted licenses as well. This is done so that the REPORTLOG file will include transactions for all license requests, which can then be reported on by FLEXadmin. To do this, include a SERVER line in

the license file, and put the USE_SERVER line immediately after the SERVER line. The vendor daemon will service the uncounted licenses, and the USE_SERVER line indicates to applications that they will be authorized by the server.

The Options File

The options file allows the license administrator to control various operating parameters of *FLEXlm*. Specifically the license administrator can:

- Allow the use of features based on user, hostname, display name, or IP-address.
- Deny the use of features based on user, hostname, display name, or IP-address.
- Reserve licenses based on user, hostname, display name, or IP-address.
- Control the amount of information logged about license usage.

Options files allow you, as the license administrator, to be as secure or open with licenses as you like.

Note—Lines in the options file were limited to 200 characters prior to *FLEXlm* v3.0. In v3.0 and later, the line length is 2048 characters. *FLEXlm* v4.0 allows the “\” character as a continuation character in options file lines.

5.1 Creating an Options File

To create an options file:

1. Use the appropriate options listed in Section 5.2, “Customizing the Options File,” on page 31 to create the options file using any text editor. You can put the options file anywhere; however, we recommend that the options file for vendor *xyz* be placed in

```
/usr/local/flexlm/options/xyz.opt (Unix)
C:\flexlm\options\xyz.opt (Windows/NT)
```

2. Add the pathname to the options file in the license file as the fourth field on the DAEMON line for the application’s vendor daemon. For example,

```
DAEMON xyzd /etc/xyzd /usr/local/flexlm/options/xyz.opt
```

would enable the *xyzd* vendor daemon to look at the specified options file.

In *FLEXlm* v5 or later, you can put “options=” before the path.

In *FLEXlm* v6 or later, adding the options path to the license file is optional.

Instead, name the file *vendor.opt*, where *vendor* is the vendor daemon name, and place it in the same directory as the license used by *lmgrd*, and it will automatically be used at server startup.

5.2 Customizing the Options File

Below is an overview of the options file syntax. See Section 5.4, “Understanding Options Files,” on page 37 for examples and additional information.

Each line of the file controls one option. The options are:

EXCLUDE	deny a user access to a feature.
EXCLUDEALL	deny a user access to <i>all</i> features served by this vendor daemon.
GROUP	define a group of users for use with any options.
HOST_GROUP	define a group of hosts for use with any options.
INCLUDE	allow a user to use a feature.
INCLUDEALL	allow a user to use <i>all</i> features served by this vendor daemon.
LINGER	cause licenses to be held by the vendor daemon for a period after the application checks them in or exits.
MAX	limit usage for a particular feature/group—prioritizes usage among users.
MAX_OVERDRAFT	limit overdraft usage to less than the amount specified in the license.
NOLOG	turn off logging certain items.
REPORTLOG	specify that a logfile be written suitable for use by the <i>FLEXadmin</i> End-User Administration Tool.
RESERVE	reserve licenses for a user.
TIMEOUT	specify idle timeout for a feature, returning it to the free pool for use by another user.
TIMEOUTALL	Set timeout on all features.

You can include comments in your options file by starting each comment line with a pound sign “#”. Everything in an options file is case sensitive. Be sure that user names and feature names, for example, are entered correctly.

FEATURENAME SPECIFICATION

Starting with *FLEXlm* v5, you can select a particular line of a given featurename, as follows:

```
featurename:name=value
```

For example:

```
f1:VERSION=2.0
```

You can specify a feature by any of the following fields:

```
VERSION HOSTID EXPDATE KEY VENDOR_STRING ISSUER NOTICE dist_info
user_info asset_info
```

In *FLEXlm* v5.11 or later, you can use a **PACKAGE** name in place of a feature name, and the option will apply to the whole package.

5.2.1 EXCLUDE

`EXCLUDE featurename type name`

Excludes a user, host, display, or group from the list of who is allowed to use the feature. Excluded users will not be allowed to use the feature.

- *featurename*—name of the feature being affected
- *type*—one of USER, HOST, DISPLAY, GROUP, HOST_GROUP, or INTERNET (see Section 5.2.3, “GROUP” and Section 5.2.4, “HOST_GROUP,” on page 33)
- *name*—name of the user or group to exclude

To exclude the user “hank” from the list of users able to use feature f1:

```
EXCLUDE f1 USER hank
```

5.2.2 EXCLUDEALL

`EXCLUDEALL type name`

Excludes a user, host, display, or group from the list of who is allowed to use all features served by this vendor daemon.

- *type*—one of USER, HOST, DISPLAY, GROUP, HOST_GROUP or INTERNET (see Section 5.2.3, “GROUP” and Section 5.2.4, “HOST_GROUP,” on page 33)
- *name*—name of the user or group to exclude

To exclude any user on the machine “chaos” from using all features served by this vendor daemon:

```
EXCLUDEALL HOST chaos
```

5.2.3 GROUP

`GROUP groupname usernamelist`

Defines a group of users for use in INCLUDE, INCLUDEALL, EXCLUDE, EXCLUDEALL, and RESERVE option lines.

- *groupname*—name of the group being defined
- *usernamelist*—list of user names in that group

To define the group Hackers consisting of bob, howard, and james:

```
GROUP Hackers bob howard james
```

Note—In FLEXlm v3.0 multiple GROUP lines will add all the users specified into the group. Pre-v3.0 FLEXlm daemons do not allow multiple GROUP lines to concatenate. In fact, the second GROUP line would re-define the GROUP.

Note—In FLEXlm v4.0 or later, USER_GROUP is an alias for GROUP.

5.2.4 HOST_GROUP

`HOST_GROUP groupname hostnamelist`

Defines a group of hosts for use in INCLUDE, INCLUDEALL, EXCLUDE, EXCLUDEALL, and RESERVE option lines.

- *groupname*—name of the group being defined
- *hostnamelist*—list of host names in that group

5.2.5 INCLUDE

INCLUDE *featurename type name*

Includes a user, host, display, or group in the list of who is allowed to use the feature. Anyone not in an INCLUDE statement will not be allowed to use that feature.

- *featurename*—name of the feature being affected
- *type*—one of USER, HOST, DISPLAY, GROUP, HOST_GROUP or INTERNET (see Section 5.2.3, “GROUP” and Section 5.2.4, “HOST_GROUP,” on page 33)
- *name*—name of the user or group to include

To include user “bob” in the list of users able to use feature f1:

```
INCLUDE f1 USER bob
```

Note—INCLUDE is required for USER_BASED or HOST_BASED features. The system administrator specifies which users are allowed to use the product, via INCLUDE, and the license limits the number of users that can be INCLUDED.

5.2.6 INCLUDEALL

INCLUDEALL *type name*

Includes a user, host, display, or group in the list of who is allowed to use all features served by this vendor daemon. Anyone not in an INCLUDEALL statement will not be allowed to use these features.

- *type*—one of USER, HOST, DISPLAY, GROUP, HOST_GROUP or INTERNET (see Section 5.2.3, “GROUP” and Section 5.2.4, “HOST_GROUP,” on page 33)
- *name*—name of the user or group to include

To allow the user “jane” to use all features served by this vendor daemon:

```
INCLUDEALL USER jane
```

5.2.7 LINGER

LINGER *featurename interval*

Rarely used. This causes the daemon to “hold on” to the license for *featurename* for *interval* seconds after the application checks the license in or exits. This could be useful for short-duration programs which will be used many times in a row by the same user, to ensure that the user will be able to re-acquire the license repeatedly. On the other hand, other users have to wait until the first user is completely finished, plus a linger interval. This is only useful if the application uses duplicate grouping.

Otherwise, LINGER will cause you to use extra licenses. Contact your software vendor for information about how they implemented duplicate grouping in their product.

5.2.8 MAX

(v5.11+ vendor daemon only).

```
MAX numlic featurename type name
```

Limits usage for a group or user.

- *numlic*—usage limit for this user or group
- *featurename*—feature this limit applies to
- *type*—USER, HOST, DISPLAY, GROUP, HOST_GROUP or INTERNET.
- *name*—name of the user or group to limit

5.2.9 MAX_OVERDRAFT

```
MAX_OVERDRAFT featurename numlic
```

Limits usage below the OVERDRAFT allowed by the license file.

5.2.10 NOLOG

```
NOLOG what
```

Turns off logging of specific events by the *FLEXlm* daemons.

- *what*—what to turn off; one of IN, OUT, DENIED, or QUEUED

To turn off logging of checkins:

```
NOLOG IN
```

To turn off logging of checkouts and queued requests two separate NOLOG lines are required:

```
NOLOG DENIED
NOLOG QUEUED
```

Note—License administrators might use this option to reduce the size of the *lmgrd* or “debug” log file.

5.2.11 REPORTLOG

```
REPORTLOG filename
```

REPORTLOG specifies the file which will contain the report-writer log for this vendor daemon. If *filename* begins with a ‘+’ character, the file will be opened for append, otherwise the file will be overwritten each time the daemon is started. *FLEXadmin*[™], a separate product available from Globetrotter, can be used to read and report on REPORTLOG files.

Note—This file is only useful with the *FLEXadmin* license administration utility.

LM_PROJECT

The *FLEXadmin* report writer can report on “projects.” A project is set up by having all users working on a project set their `LM_PROJECT` environment variable (or registry on Windows) to a string that describes the project. *FLEXadmin* can then group usage by project, as defined by what `LM_PROJECT` was set to when the application was run.

5.2.12 RESERVE

```
RESERVE numlic featurename type name
```

Reserves licenses for a specific user.

- *numlic*—number of licenses to reserve
- *featurename*—name of feature to reserve
- *type*—one of `USER`, `HOST`, `DISPLAY`, `GROUP`, `HOST_GROUP` or `INTERNET` (see Section 5.2.3, “GROUP” and Section 5.2.4, “HOST_GROUP,” on page 33)
- *name*—name of the user or group to reserve licenses for.

To reserve one license of feature `f1` for user “`mel`”:

```
RESERVE 1 f1 USER mel
```

Note—Any licenses reserved for a user are dedicated to that user. Even when that user is not actively using the license it will be unavailable to other users. However, a `RESERVED` license will not cause an overdraft to be reported by *FLEXadmin* if the license is not actually in use.

5.2.13 TIMEOUT

```
TIMEOUT featurename seconds
```

Sets the time after which an inactive license is reclaimed by the vendor daemon.

- *featurename*—name of the feature
- *seconds*—number of seconds after which inactive license is reclaimed

To set the timeout for feature `f1` to one hour (3600 seconds):

```
TIMEOUT f1 3600
```

`TIMEOUT` checks in the licenses if the process has been “idle” for a period longer than the specified time period, and someone else wants the license. The daemon declares a process idle when it has not heard from the process (the client sends heartbeats). The application must explicitly declare itself idle for this to work, or (on Unix) the application must be stopped (^Z). That is, unless the application explicitly supports this feature, it will not work. Contact your software vendor for information about how they implemented this feature in their product.

The application vendor can also disable the timeout feature, in which case the TIMEOUT option has no effect. The vendor can set a minimum value for the timeout. If you specify a timeout value smaller than the minimum, the minimum is used. The default minimum value is 900 seconds (15 minutes).

If you do not specify a timeout value in your options file, then there will be no timeout for that feature. Before v5, licenses are only freed by TIMEOUT when a new request for a license would require a license that can be freed with TIMEOUT. With v5, licenses are freed when they are timed out.

5.3 TIMEOUTALL

(v5.11+ vendor daemon only)

TIMEOUTALL *seconds*

Same as TIMEOUT, but applies to all features.

5.4 Understanding Options Files

The following information gives an overview of the syntax of a complete options file and some samples intended to illustrate ways to effectively control access to your licenses.

5.4.1 How the Vendor Daemon Uses the Options File

When the vendor daemon is started by *lmgrd*, it is passed the location of the options file. If you modify the options file while the server is running, you must stop *lmgrd*, and restart it for the changes to take effect. There can only be one options file per vendor daemon and each vendor needs a separate options file.

5.4.2 Rules of Precedence in Options Files

Before you can use options to utilize licenses effectively you must understand the options file precedence. INCLUDE and EXCLUDE statements can be combined in the same options file and control access to the same features. When doing so, keep in mind the following:

- If there is only an EXCLUDE list, everyone who is not on the list will be allowed to use the feature.
- If there is only an INCLUDE list, only those users on the list will be allowed to use the feature.
- If neither list exists, then everyone is allowed to use the feature.
- The EXCLUDE list is checked before the INCLUDE list; so someone who is on both lists will not be allowed to use the feature.

Once you create an INCLUDE or EXCLUDE list everyone else is *implicitly* “outside” the group. This feature allows you, as an administrator, the ability to control licenses without having to *explicitly* list each user that you wish to allow or deny access to. In other words there are two approaches; you can either:

- Give most users access and list only the exceptions or
- Severely limit access and list only the those users that have access privileges.

5.4.3 Simple Options File Example

```
RESERVE 1 compile USER robert
RESERVE 3 compile HOST mainline
EXCLUDE compile USER lori
NOLOG QUEUED
```

This options file would:

- Reserve one license for the feature “compile” for the user “robert.”
- Reserve three licenses for the feature “compile” for anyone on a computer with the hostname “mainline.”
- Prevent the user “lori” from using the “compile” feature on any node on the network.
- Cause QUEUED messages to be omitted from the debug log file.

The sum total of the licenses reserved must be less than or equal to the number of licenses specified in the FEATURE line. In the example above, there must be a minimum of four licenses on the “compile” FEATURE line. If fewer licenses are available, only the first set of reservations (up to the license limit) is used.

If this data were in file `/usr/local/flexlm/options/local.options`, then you would modify the license file DAEMON line as follows:

```
DAEMON xyzd /usr/local/xyzd /usr/local/flexlm/options/local.options
```

5.4.4 Limiting Access for Multiple Users

Each INCLUDE, INCLUDEALL, EXCLUDE, EXCLUDEALL, and RESERVE line must have a single user name (or group) listed. To affect more than one user name create a GROUP. For example to exclude “bob,” “howard,” and “james” from using the feature called “toothbrush” we could create the following options file:

```
EXCLUDE toothbrush USER bob
EXCLUDE toothbrush USER howard
EXCLUDE toothbrush USER james
```

There is an easier way though. Create a GROUP and exclude the list of users from using the feature. Like the previous example, the following options file would exclude “bob”, “howard” and “james” from using the feature called “toothbrush”:

```
# First define the group "Hackers"
GROUP Hackers bob howard james
```

```
# Then exclude the group
EXCLUDE toothbrush GROUP Hackers
```

Now when you want to allow or deny access to any feature to that group, you have an “alias” list to make it simple.

The GROUP function works for a list of user names prior to FLEXlm v4.0. To control access to multiple displays (and hosts in pre-v4.0 FLEXlm) you must use multiple option lines in your options file. For example, in pre-v4.0 FLEXlm to exclude all users logged in on the hosts “fred” and “barney” from using a feature called “f1” add these lines to your options file:

```
EXCLUDE f1 USER fred
EXCLUDE f1 USER barney
```

In FLEXlm v4.0, you can use HOST_GROUP to allow, deny or reserve licenses for multiple hosts. For example, to exclude all users logged in on the hosts “fred” and “barney” from using a feature called “f1” add these lines to your options file:

```
HOST_GROUP writers fred barney
EXCLUDE f1 HOST_GROUP writers
```

Note—See Section 5.2.3, “GROUP” and Section 5.2.4, “HOST_GROUP,” on page 33 for more information about defining groups.

5.4.5 EXCLUDE Example

```
#First Define the group "painters"
GROUP painters picasso mondrian klee
EXCLUDE spell GROUP painters
EXCLUDE spell USER bob
EXCLUDE spell INTERNET 123.123.123.*
```

This options file would:

- Prevent the users “picasso,” “mondrian,” and “klee” from using the feature “spell” on any machine on the network.
- Prevent the user “bob” from using the feature “spell” on any machine on the network.
- Prevent any user logged into a host with an IP-Address in the range 123.123.123.0 through 123.123.123.255 from using the feature “spell”
- Allow any other user, as long as they are not on the excluded IP-Addresses, *and* they are not a member of the “painters” GROUP *and* they are not “bob” to use feature “spell” (By implication.)

Note that “bob” could have been added to the group painters. However, “painters” might be used for some other purpose in the future so the license administrator chose to handle “bob” as a special case here. In this case, the two EXCLUDE statements concatenate to create a list of four users.

5.4.6 INCLUDE Example

```
INCLUDE paint USER picasso  
INCLUDE paint USER mondrain  
INCLUDE paint HOST bigbrush
```

This options file would:

- Allow the user “picasso” to use the feature “paint” on any machine on the network.
- Allow the user “mondrain” to use the feature “paint” on any machine on the network.
- Allow any user, as long as they are on the host “bigbrush”, to use feature “paint”
- Deny access to the feature “paint” to anyone except “picasso”, “mondrain” or anyone from the host “bigbrush” (By implication.)

License Administration Tools

FLEXlm provides utilities for the license administrator to help manage the licensing activities on the network. These utilities are:

- *lmcksum* (v2.4 or later)—prints license checksums. (page 42)
- *lmdiag* (v4.0 or later)—diagnoses license checkout problems. (page 42)
- *lmdown*—gracefully shuts down all license daemons (both *lmgrd* and all vendor daemons) on the license server node (or on all three nodes in the case of redundant servers). (page 43)
- *lmgrd*—the main daemon program for FLEXlm. (page 44)
- *lmhostid*—reports the hostid of a system. (page 45)
- *lminstall*—install a decimal format license. (page 45)
- *lmremove*—removes a single user’s license for a specified feature. (page 46)
- *lmreread*—causes the license daemon to reread the license file and start any new vendor daemons. (page 47)
- *lmstat*—helps you monitor the status of all network licensing activities. (page 47)
- *lmswitch* (VMS only) -switches the debug logfile. (page 48)
- *lmswitchr*—switches the report log file. (page 48)
- *lmver*—reports the FLEXlm version of a library or binary file. (page 49)

Beginning in FLEXlm v2.4, all FLEXlm utility programs (except *lmgrd*) are packaged as a single executable called *lmutil*. *lmutil* can either be installed as the individual commands (either by creating links to the individual command names, or making copies of *lmutil* as the individual command names), or the commands can be run as “*lmutil* command”, e.g. “*lmutil* *lmstat*”, or “*lmutil* *lmdown*”. On Windows or Windows/NT systems, the “*lmutil* command_name” form of the commands are available. There is also a Windows version of these commands—see Section 6.13.1, “License Administration Tools—LMTOOLS for Windows,” on page 49.

ARGUMENTS VALID FOR ALL LMUTIL UTILITIES

-c license_file

Most *lmutil* utilities need to know the path to the license file. This can be specified with a “*-c license_file*” argument, or by setting the LM_LICENSE_FILE environment variable. Otherwise, the default location is used.

-verbose Prints longer description for all errors found. The output from the utilities may be harder to read with this option, but is useful for diagnostics. (version 6+ only)

6.1 Imcksum

The `lmcksum` program (FLEXlm v2.4 or later) will perform a checksum of a license file. This is useful to verify data entry errors at your location. `lmcksum` will print a line-by-line checksum for the file as well as an overall file checksum. `lmcksum` takes the “-k” switch to force the encryption key checksum to be case-sensitive.

`lmcksum` will ignore all fields that do not enter into the encryption key computation; thus the server node name and port number, as well as the daemon pathname and options file names are not checksummed. In addition, `lmcksum` will treat non-case sensitive fields correctly (in general, `lmcksum` is not case-sensitive).

`lmcksum` takes an optional daemon name; if specified, only license file lines for the selected daemon are used to compute the checksums.

For FEATURE lines that contain `ck=nnn`, `lmcksum` prints simply OK or BAD.

Usage is:

```
lmcksum [-c license_file]
```

where:

`-c license_file`

is the:

path to the file to checksum. By default `lmcksum` uses “license.dat” in the current directory (unlike other `lmutil` commands).

Example output is:

```
lmcksum-Copyright (C) 1989, 1997 GLOBEtrrotter Software, Inc.
lmcksum: using license file "/usr/local/flexlm/licenses/license.dat"

189: SERVER speedy 08002b32b161 2837
166: DAEMON xyzd C:\flexlm\xyzd.exe
      8: FEATURE f1 xyzd 1.000 01-jan-99 0 3B2BC33CE4E1B8F3A0BF ""
OK:   231: FEATURE f2 xyzd 1.0 01-jan-0 1 8B1C30015351B7737F5E \
      DUP_GROUP=HD ck=231
109: (overall file checksum)
```

6.2 lmdiag

`lmdiag` (FLEXlm v4.0 or later) allows you to diagnose problems when you cannot check out a license.

Usage is:

```
lmdiag [-c license_file] [-n] [feature]
```

where:	is the:
-c <i>license_file</i>	path to the file to diagnose.
-n	run in non-interactive mode; <code>lmdiag</code> will not prompt for any input in this mode. In this mode, extended connection diagnostics are not available.
<i>feature</i>	diagnose this feature only.

If no *feature* is specified, `lmdiag` will operate on all features in the license file(s) in your path. `lmdiag` will first print information about the license, then attempt to check out each license. If the checkout succeeds, `lmdiag` will indicate this. If the checkout fails, `lmdiag` will give you the reason for the failure. If the checkout fails because `lmdiag` cannot connect to the license server, then you have the option of running “extended connection diagnostics”.

These extended diagnostics attempt to connect to each port on the license server node, and can detect if the port number in the license file is incorrect. `lmdiag` will indicate each port number that is listening, and if it is an *lmgrd* process, `lmdiag` will indicate this as well. If `lmdiag` finds the vendor daemon for the feature being tested, then it will indicate the correct port number for the license file to correct the problem.

See Also: Appendix B, “FLEXLM_DIAGNOSTICS” on page 56.

6.3 lmdown

The `lmdown` utility allows for the graceful shutdown of all license daemons (both *lmgrd* and all vendor daemons) on all nodes.

Usage is:

```
lmdown [-c license_file] [-vendor name] [-q]
```

where:	is:
-c <i>license_file</i>	Use the specified license file.
-vendor <i>name</i>	Only shutdown this one vendor daemon. <code>lmgrd</code> will always continue running if this option is specified. Requires v6.0 <code>lmdown</code> and <code>lmgrd</code> (the vendor daemon can be any version).
-q	Don’t prompt or print a header. Otherwise <code>lmdown</code> asks “Are you sure? [y/n]: “.

You may want to protect the execution of `lmdown`, since shutting down the servers causes users to lose their licenses. See the “-p” or the “-x” options in Section 6.4, “*lmgrd*,” on page 44 for details about securing access to `lmdown`.

If `lmdown` encounters more than one server (for example if -c specifies a directory with many *.lic files) a choice of servers to shutdown is presented.

To stop and restart a single vendor daemon, use `lmdown -vendor name`, then, use `lmreread -vendor name`, which restarts the vendor daemon.

Note—When shutting down redundant servers, there is a one-minute delay before the servers shut down. Do **not** use “kill -9” to shut down the license servers.

See Also: Section 6.8, “lmreread,” on page 47.

6.4 lmgrd

`lmgrd` is the main daemon program for *FLEXlm*. When you invoke `lmgrd`, it looks for the license file which contains the information about vendors and features. On Unix systems, it is strongly recommended that `lmgrd` be run as a non-privileged user (not *root*).

Usage is:

```
lmgrd [ -app ] [ -c license_file ] [ -t timeout_interval ] [ -l logfile ]
[ -s timestamp_interval ] [ -2 -p ] [ -v ] [ -x lmdown ] [ -x lmremove ]
```

where:

is:

<code>-app</code>	Required for Windows/NT systems when run as a command, but not used when run as a service.
<code>-c license_file</code>	Use the license file named.
<code>-t timeout_interval</code>	Sets a timeout interval, in seconds, during which redundant daemons must complete their connections to each other. The default value is 10 seconds. A larger value may be desirable if the daemons are being run on busy systems or a very heavily loaded network.
<code>-l logfile</code>	Write the debug log to <i>logfile</i> .
<code>-s timestamp_interval</code>	Specifies the logfile timestamp interval, in minutes. The default is 360 minutes.
<code>-2 -p</code>	Restricts usage of <code>lmdown</code> , <code>lmreread</code> , and <code>lmremove</code> to a <i>FLEXlm</i> administrator who is by default <i>root</i> . If there is a UNIX group called “ <i>lmadmin</i> ” then use is restricted to only members of that group. If <i>root</i> is not a member of this group, then <i>root</i> does not have permission to use any of the above utilities. The “ <code>-p</code> ” option is available in <i>FLEXlm</i> v2.4 and later.
<code>-v</code>	Prints <i>lmgrd</i> 's version number and copyright and exits.
<code>-x lmdown</code>	Disallow the <code>lmdown</code> command (no user can run <code>lmdown</code>). If <code>lmdown</code> is disabled, you will need to stop <code>lmgrd</code> via “ <code>kill pid</code> ” (Unix) or CTRL-ALT-DEL and stop the

	lmgrd and vendor daemon processes (Windows 95). On Unix, be sure the kill command does not have a -9 argument.
-x lmremove	Disallow the lmremove command (no user can run lmremove)

Note—The -x lmdown and -x lmremove options are available in FLEXlm v4.0 and later.

6.5 lmhostid

The `lmhostid` utility reports the hostid of a system.

Usage is:

```
lmhostid [-n]
```

The output of this command looks as follows:

```
lmhostid - Copyright (c) 1989, 1997 Globetrotter Software, Inc.
The FLEXlm hostid of this machine is "69021c89"
```

With the “-n” argument, no header is printed; only the hostid.

See Appendix A, “Hostids for FLEXlm-Supported Machines”.

6.6 lminstall

New in version 6, `lminstall` is designed primarily for typing in decimal format licenses to generate a readable format license file.

Usage is:

```
lminstall [-i {infile | -}] [-o outfile] \
          [-overfmt {2 | 3 | 4 | 5 | 5.1 | 6}] [-odecimal]
```

Normally, `lminstall` is used with no arguments; you are prompted for the name of the output license file. The default name is today’s date in `yyyymmddmm.lic` format. The file should be moved to the application’s default license file directory, if specified by the software vendor. Otherwise, use `LM_LICENSE_FILE` or `VENDOR_LICENSE_FILE` to specify the directory where the *.lic files are located.

Decimal format input is verified by checksum of each line.

To finish entering, type “q” on a line by itself, or enter 2 blank lines.

If *infile* is a dash (-), it takes input from stdin. When ‘-i’ is used, default output is stdout; otherwise if -o is not specified, `lminstall` prompts the user for an output file name.

LMINSTALL AS A CONVERSION TOOL:

`lminstall` can alternatively be used to convert licenses between decimal and readable format, and between different versions of FLEXlm license formats.

To convert from readable to decimal:

```
% lminstall -i infile -o outfile -odecimal
```

To convert to FLEXlm Version 2 format:

```
% lminstall -i infile -o outfile -verfmt 2
```

Conversion errors are reported as necessary. `lminstall` has a limit of 1000 lines of input.

6.7 Imremove

The `lmremove` utility allows you to remove a single user's license for a specified feature. This is only needed when a client node crashes, since that's the only condition where a license is not automatically freed. If the application is active, it will re-checkout the license after it is freed by `lmremove`.

Usage is:

```
lmremove [ -c file ] feature user host display
or
lmremove [ -c file ] -h feature host port handle
```

where:	is the:
<code>-c license_file</code>	license file
<code>feature</code>	name of the feature checked out by the user.
<code>user</code>	name of the user whose license you are removing (from <code>lmstat -a</code>).
<code>host</code>	name of the host the user is logged in to (from <code>lmstat -a</code>).
<code>display</code>	name of the display where the user is working (from <code>lmstat -a</code>).
<code>port</code>	port, as reported by <code>lmstat -a</code>
<code>handle</code>	handle, as reported by <code>lmstat -a</code>

The `user host display port and handle` information must be obtained from the output of `lmstat -a`.

`lmremove` removes all instances of `user` on `host` on `display` from usage of `feature`. If the optional "`-c file`" is specified, the indicated file is used as the license file. You should protect the execution of `lmremove`, since removing a user's license can be disruptive. See the "`-p`" or the "`-x`" options in Section 6.4, "Imgrd," on page 44 for details about securing access to `lmremove`.

The `-h` variation uses the serverhost, port, and license handle, as reported by `lmstat -a`. Consider this example `lmstat -a` output:

```
joe cloud7 /dev/tty5 (v1.000) (cloud9/7654 102), start Fri 10/29 18:40
```

In this example, the serverhost is "cloud9", the port is "7654" and the license handle is 102. To remove this license, issue the following command:

```
lmremove -h f1 cloud9 7654 102
```

or

```
lmremove fl joe cloud7 /dev/tty5
```

When removing by handle, if licenses are grouped as duplicates, all duplicate licenses will also be removed.

6.8 lmreread

The `lmreread` utility causes the license daemon to reread the license file and start any new vendor daemons that have been added. In addition, all running daemons will be signaled to reread the license file for changes in feature licensing information.

Usage is:

```
lmreread [-c license_file] [-vendor name]
```

where:

`-c license_file`

`-vendor name`

is:

Use the specified license file.

Only this one vendor daemon should reread the license file. `lmgrd` will restart the vendor daemon if necessary. Requires v6.0 `lmreread` and `lmgrd` (the vendor daemon can be any version).

The license administrator may want to protect the execution of `lmreread`. See the “-p” and “-x” options in Section 6.4, “`lmgrd`,” on page 44 for details about securing access to `lmreread`.

To stop and restart a single vendor daemon, use `lmdown -vendor name`, then use `lmreread -vendor name`, which restarts the vendor daemon.

Note—If you use the “-c” option, the license file specified will be read by `lmreread`, not by `lmgrd`; `lmgrd` rereads the file it read originally. Also, `lmreread` cannot be used to change server node names or port numbers. Vendor daemons will not reread their option files as a result of `lmreread`.

Note—`lmreread` does not cause the vendor daemon to reread the options file. For options file changes to take effect, `lmgrd` must be stopped (`lmdown`) and restarted.

See Also: Section 6.8, “`lmreread`,” on page 47.

6.9 lmstat

The `lmstat` utility helps you monitor the status of all network licensing activities.

Usage is:

```
lmstat [-a] [ -A ] [-c license_file] [-f feature] [-i [feature]]
        [-S vendor] [-s hostname] [-t value]
```

where:

`-a`

is:

Display all information

-A	List all active licenses
-c <i>license_file</i>	Use the license file named.
-f <i>feature_name</i>	List users of <i>feature_name</i> .
-i [<i>feature_name</i>]	Print information about the named <i>feature</i> , or all features if no <i>feature_name</i> is given. This option is usually not recommended, since the information does not come from the license server, and may not reflect what the server actually supports.
-S [<i>vendor</i>]	List all users of <i>vendor</i> 's features.
-s <i>hostname</i>	Display status of clients running on <i>hostname</i> .
-t <i>value</i>	Set <code>lmstat</code> timeout to "value".

6.10 lmswitch

Note—The `lmswitch` command is available on VMS only.

The `lmswitch` utility switches the debug log file for the daemon serving the specified feature while the daemon is running.

Usage is:

```
lmswitch feature new-file
```

where:	is the:
<i>feature</i>	any feature this daemon supports.
<i>new-file</i>	the new file path.

Of course, for this syntax to work, `lmswitch` needs to be installed as a foreign command.

The new logfile will be opened for write, rather than append, so it is possible to "switch" to the same filename in order to be able to view the old log file.

6.11 lmswitchr

The `lmswitchr` utility switches the report writer (REPORTLOG) log file. It will also start a new REPORTLOG file if one does not already exist.

Usage is:

```
lmswitchr [-c license_file] feature new-file
lmswitchr [-c license_file] vendor new-file [v5.0+ only]
```

where:	is the:
-c	license file path
<i>feature</i>	any feature this daemon supports
<i>new-file</i>	new file path

Note—lmswitchr does not work with FLEXlm v3.0 vendor daemons. Ask your vendor for a later version of their vendor daemon.

6.12 lmver

The `lmver` utility reports the FLEXlm version of a library or binary file.

Usage is:

```
lmver filename
```

where:

filename

is the:

name of the executable of the product.

For example if you have an application called “spell” type:

```
% lmver spell
```

Alternatively, on Unix systems, you can use the following commands to get the FLEXlm version of a binary:

```
strings file | grep Copy
```

6.13 License Administration Tools for Windows

6.13.1 License Administration Tools—LMTOOLS for Windows

For the 32 Bit Windows Platforms, an LMTOOLS.EXE Windows program is provided. It has the same functionality as listed in the previous sections but is graphically-oriented. Simply run the program and choose a button for the functionality required. Refer to the previous sections for information about the options of each feature. The command line interface is replaced by pop-up dialogs that can be filled out. The central EDIT field is where the license file path is placed. This will be used for all other functions and replaces the “-c *license_file*” argument in `lmutil`.

The HOSTID button displays the `hostid`'s for the computer on which the program is running. The TIME button prints out the system's internal time settings, intended to diagnose any time zone problems. The TCP Settings button is intended to fix a bug in the Microsoft TCP protocol stack which has a symptom of very slow connections to computers. After pressing this button, the system will need to be rebooted for the settings to become effective.

6.13.2 The FLEXlm Control Panel

The FLEXlm control panel, FLEXLM.CPL, is an applet that installs into the Control Panel of Windows and is used to control the execution of the FLEXlm license manager. If the software you are installing includes the Control Panel, it will be installed in your Windows System Directory.

The library LMGR325B.DLL needs to be available for FLEXLM.CPL. In this example it is placed in the same directory, but it could be placed anywhere in the system search path.

6.13.3 Controlling LMGRD with the Windows Control Panel

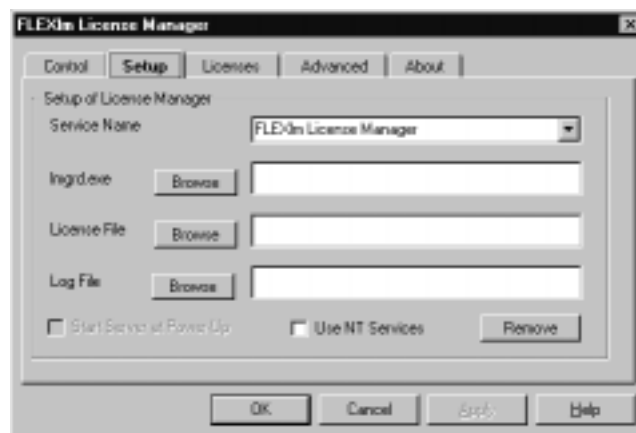
LMGRD.EXE can be run manually or using the Control Panel. FLEXlm for Windows comes with a Control Panel applet for controlling LMGRD.EXE without using the DOS prompt.

6.13.4 Using The Control Panel on NT

To start the FLEXlm Control Panel, open the Control Panel and double-click on the FLEXlm License Manager icon.



From the Control tab you can start, stop, and check the status of your license server. Select the Setup tab to enter information about your license server.



The Service Name of “FLEXlm License Manager” is the default (for backwards compatibility). You should change this to a name that your vendor recommends. Complete the form to configure *lmgrd* to serve licenses.

The information you enter is stored in the registry under the service name you created:

```
HKEY_LOCAL_MACHINE\SOFTWARE\FLEXlm License Manager\Service-Name\...
```

Select the *Control* tab and click the *Start* button to turn on your license server. LMGRD.EXE will be launched as a background application with the license file and debug log file locations passed as parameters.

If you want LMGRD.EXE to start automatically, select the “Use NT Services” box and LMGRD.EXE will be installed as an NT service. You can then use the NT’s Services control panel to adjust the start/stop behavior of LMGRD.EXE. Since NT services do not have command line parameters, LMGRD.EXE, when started as a service, locates its service name under “FLEXlm License Manager” in the registry and from there recovers the license file and log file locations. Multiple instances of LMGRD.EXE can be run as services provided each occurrence has a different service name.

You can switch back and forth between different instances of LMGRD.EXE by using the *Setup* tab and changing the selection in “Service Name”. This is only necessary if you have more than one product licensed with FLEXlm.

The remaining tabs in the control panel allow you a subset of control similar to the LMUTIL.EXE program. The Licenses tab provides information about the license file and the Advanced tab allows you to perform diagnostics and check versions.

6.13.5 Using the Control Panel on Windows 95

The behavior of the control panel applet FLEXLM.CPL is almost identical under Windows 95 and NT. FLEXLM.CPL is located in the Windows\System directory. If you are starting LMGRD.EXE manually from the *Control* tab, there is no difference between the two. But, since services are not available on Windows 95, the *Use NT Service* check box is not available. Instead a *Start Server at Power-UP* check box gives you the option to start the server when the system is booted.

On Windows 95, FLEXlm makes use of a registry feature that launches programs automatically. The “Microsoft\Windows\CurrentVersion\RunServices” registry is used to launch the program LMGRD95.EXE at power-on. This program scans the “FLEXlm License Manager” area of the registry and launches an instance of LMGRD.EXE for each service-name it finds.

Note: If someone switches users (i.e. selects “shutdown” and chooses “close all programs and log on as a different user”) on Windows 95, all instances of LMGRD.EXE will be terminated (see Microsoft documentation). This is one of the reasons we do not recommend using Windows 95 as a license server.

Hostids for FLEXlm-Supported Machines

FLEXlm uses different machine identifications for different machine architectures. For example, all Sun Microsystems, Inc. machines have a unique hostid, whereas all DEC machines do not. For this reason, the ethernet address is used on some machine architectures as the “hostid”. An ethernet address is a 6-byte quantity, with each byte specified as two hexadecimal digits. Specify all 12 hex digits when using an ethernet address as a hostid. For example, if the ethernet address is 8:0:20:0:5:ac, you would specify “0800200005ac” as the hostid.

The program `lmhostid` will print the exact hostid that FLEXlm expects to use on any given machine. The following table lists alternate methods to obtain the required hostid for each machine architecture

Numeric, 32-bit hostids are normally used in hexadecimal format. On some systems, including HP and SGI, the system command returns the number in decimal format. Since v3.0 of FLEXlm, a ‘#’ before the hostid, indicates to FLEXlm that this is a decimal number. For example, if the HP `uname -i` command returns “2005771344”, FLEXlm will accept “#2005771344”. Or it can be converted to hexadecimal. On Unix system, you can convert to hex with the following script:

```
% echo 2005771344 16o p | dc
778DA450
```

A.1 Hostid Table

Hardware Platform	Hostid	Type this command on the license server:	Example
AIX (RS/6000, PPC)	32-bit hostid	<code>uname -m</code> (returns 000276513100), then remove last 2 digits, and use remaining last 8 digits	02765131
DEC Alpha	ethernet address	<code>netstat -i</code>	080020005532

Hardware Platform	Hostid	Type this command on the license server:	Example
HP	32-bit hostid	uname -i and convert to hex, or prepend with #	778DA450 or #2005771344
	ethernet address	lanscan (station address without leading "0x")	0000F0050185
Linux	ethernet address	/sbin/ifconfig eth0 and remove colons from HWaddr 00:40:05:16:E5:25	00400516E525
SCO	Hostid String	uname -x (returns SCO00354), then prefix with "ID_STRING="	ID_STRING=SCO00354
SGI	32-bit hostid	/etc/sysinfo -s, convert to hex, or prefix '#'	69064C3C or #1762020412
SUN	32-bit hostid	hostid	170a3472
VAX/VMS Alpha/OpenVMS	ethernet address	ncp ¹	0800200055327
Windows	ethernet	lmutil lmhostid	0800200055327
	Disk serial number	DIR C: (look for "Volume Serial Number is", and remove "-")	DISK_SERIAL_NUM=1CA25283
	Dongle— parallel port hardware key	lmhostid -flexid	FLEXID=72850003

1. On VMS, you can get the ethernet address via ncp:

```
$ mcr ncp
NCP> show known lines
Known Line Volatile Summary as of 6-NOV-1989 14:41:48
Line                               State
SVA-0                               on
NCP> show line SVA-0 char
```

Then, use the ethernet address ("Hardware address") as the hostid, using all 12 digits, with no intervening characters. If no ethernet address can be, FLEXlm will use the system ID.

Troubleshooting Guide

This appendix documents areas of FLEXlm that have given customers difficulty in the past. We hope it helps you debug any problems you might experience at your site.

B.1 General Debugging Hints

The following are tips for debugging:

- When you start the license server (*lmgrd*) be sure that you direct the output into a log file where you can examine it. The log file often contains useful information. You should examine it when you have a problem, and be prepared to answer questions about it when you talk to a support person.
- If the license server appears to have started correctly (which you should be able to determine from the log file), try running `lmstat -a` and `lmdiag` to see if that program has the same problem as your application.
- If your application is FLEXlm v4.1 or later (v5 on Windows), you can use the FLEXLM_DIAGNOSTICS environment variable. Set FLEXLM_DIAGNOSTICS to 1 or 2. (2 gives more information than 1, in particular, the feature name that was denied.)

When you talk to a support person, you should be prepared to answer the following questions:

- What kind of machine is your license server running on? What version of the operating system? What machine and operating system is the application running on?
- What version of FLEXlm does the program use? Use the `lmver` script, or, on Unix, execute the following command on your *lmgrd*, vendor daemon, and application

```
strings <program> | grep Copy
```

Alternatively, `lmgrd -v` gives the version, and this works with the vendor daemon also.

- What error or warning messages appear in the log file? Did the server start correctly? Look for a message such as:

```
server xyz started for: feature1 feature2.
```

- What is the output from running `lmstat -a`?
- Are you running other products which are also licensed by FLEXlm? Are you using a combined license file or separate license files?

- Are you using redundant servers (multiple SERVER lines in your license file)?

B.2 FLEXLM_DIAGNOSTICS

Note—Available only with applications using FLEXlm v4.1 or higher for Unix, and v5.0 or higher with Windows. Also, applications may choose not to provide this functionality.

FLEXLM_DIAGNOSTICS is an environment variable that will cause the application to produce diagnostic information when a checkout is denied. The format of the diagnostic information may change over time.

To set FLEXLM_DIAGNOSTICS, on Unix:

```
(csh): % setenv FLEXLM_DIAGNOSTICS 1
(sh): $ FLEXLM_DIAGNOSTICS=1; export FLEXLM_DIAGNOSTICS
```

On Windows 3.1 and 95, add the following line to C:\autoexec.bat:

```
SET FLEXLM_DIAGNOSTICS=1
```

On NT, use the System Control Panel applet to change the global environment, adding FLEXLM_DIAGNOSTICS to 1.

On Unix, the diagnostic output goes to *stderr*.

On Windows, if the application is v5.11 or higher, the output is a file in the current directory called *flexnnn.log*, where *nnn* is the application's process ID. If the application is v5.0, the output file is called *flex_err.log*.

B.2.1 Level 1 Content

If FLEXLM_DIAGNOSTICS is set to 1, then the standard FLEXlm error message will be presented, plus a complete list of license files that the application tried to use. For example:

```
% setenv FLEXLM_DIAGNOSTICS 1
FLEXlm checkout error: Cannot find license file (-1,73:2) No such file
or directory
license file(s): /usr/myproduct/licenses/testing.dat license.dat
```

B.2.2 Level 2 Content

If FLEXLM_DIAGNOSTICS is set to 2, then, in addition to level 1 output, the checkout arguments are presented. For example:

```
% setenv FLEXLM_DIAGNOSTICS 2
FLEXlm checkout error: No such feature exists (-5,116:2) No such file or
directory
license file(s): /usr/myproduct/licenses/testing.dat license.dat
lm_checkout("f1", 1.0, 1, 0x0, ..., 0x4000)
```

Note that the error message actually contains 2 separate problems, which both occurred during the checkout: there's no such feature in the license it did find, and it was unable to find the other license file, which is what produces the message "No such file or directory".

Following is a description of the arguments to *lm_checkout()*

```
lm_checkout(feature_name, version, nlic, queue_flag, ..., dupgroup_mask)
```

where:	is:
<i>feature_name</i>	the requested feature
<i>version</i>	requested version. The license file must contain a version >= the requested version.
<i>nlic</i>	number of licenses requested. Usually 1.
<i>queue_flag</i>	If 0, no queueing If 1, queue for license (“blocking” queue) If 2, queue for licenses, but return to application (“non-blocking” queue)
<i>dupgroup_mask</i>	Indicates duplicate grouping, also called license sharing. User, host and display are as shown by <i>lmstat -a</i> .

B.2.3 Level 3 Content (FLEXlm v6 or later only)

If `FLEXLM_DIAGNOSTICS` is set to 3, then, in addition to level 1 and 2 output, if a checkout is successful, information is printed explaining how the license was granted:

```
% setenv FLEXLM_DIAGNOSTICS 3
% application
Checkout succeeded: f0/14263EAEA8E0
License file: ./servtest.lic
No server used
% application2
Checkout succeeded: f1/BC64A7B120AE
License file: @localhost
License Server: @localhost
% application3
Checkout succeeded: f1/BC64A7B120AE
License file: servtest.lic
License Server: @speedy
```

Note that the feature name and license key are printed, along with the license file location (or hostname if @host were used) and hostname of the server, where applicable.

B.3 FLEXlm Troubleshooting List

B.3.1 Problem Description Format

Each problem is presented in three parts:

Symptom: *A description of the problem.*

Cause: A discussion of what causes the problem described in the “Symptom” section.

Solution: Instructions on how to solve the problem.

You can scan through the list of problems to find any which appear to relate to your concerns. In order to solve your problem, you may have to use all or some of the solutions listed here.

B.3.2 Hostid Problems

Symptom: *When I run the license manager on my machine, it tells me it is the wrong hostid.*

Cause: The vendor daemon checks the hostid listed on the SERVER line in the license file; if it does not match the hostid of the machine it is running on, this message will be printed. Possible causes include 1) you are trying to run the license server on a different machine from the machine the file was made for; 2) the hostid of the machine you are running on changed (for example, the dongle hostid was moved (Windows), or the CPU board was replaced); 3) the hostid in the license file was modified.

Solution: Verify that the hostid of the machine on which the vendor daemon (or node locked client program) is being run matches the hostid specified in the license file (on the SERVER line for the vendor, or on the FEATURE line for a node locked client). You can run the `lmhostid` program to see what FLEXlm thinks the hostid is. You may not modify the hostid in the license file. If the hostid of your server machine changes, you will have to get a new license file from your software vendor.

B.3.3 Connection Problems

Symptom: *The application program (or lmstat) can't connect to the server to check out a license.*

Cause: The FLEXlm routines in the application are unable to make a TCP connection to the server and port specified in the license file. Possible reasons for this are: 1) the wrong license file is being referenced by the application program; 2) the server machine specified in the license file is down; 3) the vendor daemon specified in the license file is not running; 4) the hostname in the license file is not recognized by the system; 5) the network between the client machine and the server machine is down; 6) You are mixing FLEXlm v1.5 (or earlier) and v2.1 (or later) vendor daemons in one license file, and have run `lmgrd` without the `-b` command line option; 7) TCP is not running on your machine.

Solution: The `lmdiag` utility is designed primarily to debug this problem, so first, try `lmdiag`. Verify that the application is using the proper license file. Verify that specified server machine is up and reachable by executing another command that uses TCP, such as `telnet`, from the client to the

server. Verify that the vendor daemon is running (you can use `ps` on the server to look for it). Examine the license log file to see if any problems are reported, particularly messages indicating that the vendor daemon has quit. Run `lmstat -a` from the server machine to verify that the vendor daemon is alive. Run `lmstat -a` from the client machine to verify the connection from client to vendor daemon across the network. Try using `telnet <hostname> <portnum>` where `hostname` and `portnum` are the same as on the `SERVER` line in your license file.

B.4 Other Client Problems

Symptom: *When I run my application program (or vendor daemon), I get the error bad code or inconsistent encryption code.*

Cause: Possible causes for this are 1) the license file was modified (either the `hostid` on a `SERVER` line or anything on the `FEATURE` line was changed); 2) the vendor used the wrong version of his license creation program to generate your license file (or there is a bug in that process).

Solution: You may not modify the license file (except for specific fields, see Chapter 2, “The License File” on page 7). If you need to change something in your license file, you must get a new license file from your software vendor.

Symptom: *When the second user tries to check out a license, the vendor daemon prints an error concerning Parameter mismatch in the log file and refuses the license.*

Cause: The most likely cause of this problem is that you are simultaneously trying to run two different versions of the application program, and the software vendor has not specifically set up the new version for this kind of compatibility. Check the license server log file for a `comm version mismatch` warning message; this indicates that someone is running an older client than the license server daemon, `lmgrd`.

Solution: Run only the new version of the application (or only the old version).

B.5 Other Server Problems

Symptom: *When I run the vendor daemon on my VMS system, I get the error message socket bind: permission denied (13).*

Cause: The daemon needs to bind the socket address in order to be able to listen for connections from clients. This is done in the system name table, so it requires the `SYSNAM` privilege.

Solution: Run the daemon in a process with the `SYSNAM` privilege set.

Symptom: *When I start up `lmgrd`, it says `exec1` failed on my vendor daemon.*

Cause: *`lmgrd` uses `exec1` to start each vendor daemon running. If there is a problem starting the vendor daemon, this message is output to the log file. This error is typically caused by one of the following: 1) there is no executable at the location referred to by the license file (and printed out in the log file); 2) the executable does not have the proper permissions to be run (the file does not have the “x” bit set, or one of the directories in the path is not readable); 3) there was an error building the executable, and it can not be run; 4) the executable is for a different machine architecture.*

Solution: *Verify that the path to the vendor daemon is absolute (i.e. starts with a slash character, and that it points to the executable program itself, not the containing directory (for `FLEXlm v1.5`). Ensure that the file exists by doing an `ls -l` of the vendor daemon filename(s) specified in the log file. Make sure you do this as the same user that started `lmgrd`. Verify that the file is executable. Note that if you are running as root and using an NFS-mounted filesystem, the relevant protection bits are the “other” bits (*not* the “user” bits), even if the file is owned by root. Do a `what is` on the file (if your system has that program). `what is` should tell you the file is an executable for the machine you are trying to run it on. Run the vendor daemon directly from the command line. If the vendor daemon is properly linked, it will tell you that it must be run from `lmgrd`; if it crashes or fails to execute, then it is not properly linked.*

Symptom: *The license server keeps reporting “lost lock” errors in the log file and exiting.*

Cause: *The lockfile (normally placed in `/usr/tmp` on Unix, `C:\flexlm` on Windows/NT, `SYS:\SYSTEM\FLEXLM` on Netware) is being removed by someone else. There could be another daemon running, or the license administrator (or a script he set up) could have deleted the file.*

Solution: *Check to see if there is more than one copy of the daemon running. On Unix use a command like `ps -aux | grep vendorname` to search for it. Check for more than one `lmgrd` running as well, since it will restart your vendor daemon when it is killed. If more than one `lmgrd` is running, kill them all (using the `kill` command, not `kill -9` on Unix or the Control Panel Services dialog on Windows/NT), then kill any remaining vendor daemons (on Unix, try a simple `kill`, if that fails then try `kill -9 the lmgrd` and all vendor daemons) and start one fresh copy of `lmgrd`. On Unix, check to see if there is a shell script running that cleans out `/tmp` (or `/usr/tmp`). If so, try modifying it so that it does not delete zero length files.*

Frequently Asked Questions

C.1 License File Questions

C.1.1 I've received FLEXlm license files from 2 different companies. Do I have to combine them?

You don't have to combine license files. Each license file that has any "counted" lines (the "number of licenses" field is >0) requires a server. It's perfectly OK to have any number of separate license files, with different lmgrd server processes supporting each file. Moreover, since lmgrd is a lightweight process, for sites without system administrators, this is often the simplest (and therefore recommended) way to proceed. With v6+ lmgrd/lmdown/lmreread, you can stop/reread/restart a single vendor daemon (of any FLEXlm version). This makes combining licenses more attractive than previously. Also, if the application is v6+, using dir/*.lic for license file management behaves like combining licenses without physically combining them.

C.1.2 When is it recommended to combine license files?

Many system administrators, especially for larger sites, prefer to combine license files to ease administration of FLEXlm licenses. It's purely a matter of preference.

C.1.3 Does FLEXlm handle dates in the year 2000 and beyond?

Yes. The FLEXlm date format uses a 4-digit year. Dates in the 20th century (19xx) can be abbreviated to the last 2 digits of the year (xx), and use of this feature is quite widespread. Dates in the year 2000 and beyond must specify all 4 year digits.

C.2 FLEXlm Versions

C.2.1 I have products from several companies at various FLEXlm version levels. Do I have to worry about how these versions work together?

If you're not combining license files from different vendors, the simplest thing to do is make sure you use the tools (especially lmgrd) that are shipped by each vendor.

lmgrd will always correctly support older versions of vendor daemons and applications, so it's ALWAYS safe to use the latest version of lmgrd and the lmutil utilities. If you've combined license files from 2 vendors, you *must* use the latest version of lmgrd.

If you've received 2 versions of a product from the same vendor, you *must* use the latest vendor daemon they send you. An older vendor daemon with a newer client will cause communication errors.

Please ignore letters appended to FLEXlm versions, i.e., v2.4d. The appended letter indicates a patch, and does NOT indicate any compatibility differences. In particular, some elements of FLEXlm didn't require certain patches, so a 2.4 Imgrd will work successfully with a 2.4b vendor daemon.

C.2.2 I've received a new copy of a product from a vendor, and it uses a new version of FLEXlm. Is my old license file still valid?

Yes. Older FLEXlm license files are always valid with newer versions of FLEXlm.

C.2.3 I've received a new license file, and the format is different from the old one I had from the same vendor? Why? Are they compatible?

As of v3.0, FLEXlm has an optional new format for license files. FLEXlm products always understand older versions; therefore, the pre-v3.0 files are understood by every FLEXlm version. However, your old applications (pre-FLEXlm v3.0) will not be able to use the new license file. See Also: Section 2.2, "License File Format," on page 10.

C.3 Using FLEXlm

C.3.1 Does FLEXlm work across the internet?

Yes. A server on the internet will serve licenses to anyone else on the internet. This can be limited with the INTERNET= attribute on the FEATURE line, which limits access to a range of internet addresses. You can also use the INCLUDE and EXCLUDE options in the daemon option file to allow (or deny) access to clients running on a range of internet addresses.

C.3.2 Does FLEXlm work with Internet firewalls?

Many firewalls require that port numbers be specified to the firewall. FLEXlm v5 Imgrd supports this.

C.3.3 If my client dies, does the server free the license?

Yes, unless the client's whole system crashes. Assuming communications is TCP, the license is automatically freed immediately. If communications are UDP, then the license is freed after the UDP timeout, which is set by each vendor, but defaults to 45 minutes. UDP communications is normally only set by the end-user, so TCP should be assumed. If the whole system crashes, then the license is not freed, and you should use Imremove to free the license.

C.3.4 What happens when the license server dies?

FLEXlm applications send periodic heartbeats to the server to discover if it has died. What happens when the server dies is then up to the application. Some will simply continue periodically attempting to re-checkout the license when the server comes back up. Some will attempt to re-checkout a license a few times, and then, presumably with some warning, exit. Some GUI applications will present pop-ups to the user periodically letting them know the server is down and needs to be re-started.

C.3.5 How do you tell if a port is already in use?

99.44% of the time, if it's in use, it's because `lmgrd` is already running on the port—or was recently killed, and the port isn't freed yet. Assuming this is not the case, then use 'telnet host port'—if it says "can't connect", it's a free port.

C.3.6 Does FLEXlm require root permissions?

No. There is no part of FLEXlm, `lmgrd`, vendor daemon or application, that requires root permissions. In fact, it is *strongly recommended* that you do not run the license server (`lmgrd`) as root, since root processes can introduce security risks. If `lmgrd` must be started from the root user (for example, in a system boot script), we recommend that you use the `su` command to run `lmgrd` as a non-privileged user:

```
su username -c "/path/lmgrd -c /path/license.dat -l /path/log"
```

where *username* is a non-privileged user, and *path* is the correct paths to `lmgrd`, `license.dat` and debug log file. You will have to ensure that the vendor daemons listed in `/path-to-license/license.dat` have execute permissions for *username*. The paths to all the vendor daemons in the license file are listed on each DAEMON line.

C.3.7 Is it ok to run lmgrd as “root” (Unix only)?

It is not prudent to run any command, particularly a daemon, as root on Unix, as it may pose a security risk to the Operating System. Therefore, we recommend that `lmgrd` be run as a non-privileged user (not “root”). If you are starting `lmgrd` from a boot script, we recommend that you use

```
su username -c "umask 022; lmgrd..."
```

to run `lmgrd` as a non-privileged user.

C.3.8 Does FLEXlm licensing impose a heavy load on the network.

No, but partly this depends on the application, and end-user's use. A typical checkout request requires 5 messages and responses between client and server, and each message is < 150 bytes.

When a server is not receiving requests, it requires virtually no CPU time.

When an application, or `lmstat`, requests the list of current users, this can significantly increase the amount of networking FLEXlm uses, depending on the number of current users.

Also, prior to FLEXlm v5, use of “port@host” can increase network load, since the license file is down-loaded from the server to the client. port@host should be, if possible, limited to small license files (say < 50 features). In v5, port@host actually *improves* performance.

C.3.9 Does FLEXlm work with NFS?

Yes. FLEXlm has no direct interaction with NFS. FLEXlm uses an NFS-mounted file like any other application.

C.3.10 Does FLEXlm work with ATM, ISDN, Token-Ring, etc.

In general, these have no impact on FLEXlm. FLEXlm requires TCP/IP or SPX (Novell Netware). So long as TCP/IP works, FLEXlm will work.

C.3.11 Does FLEXlm work with subnets, fully-qualified names, multiple domains, etc.?

Yes, although this behavior was improved in v3.0, and v6.0.

When a license server and a client are located in different domains, fully-qualified host names have to be used. A “fully-qualified hostname” is of the form: node.domain, where “node” is the local hostname (usually returned by the ‘hostname’ command or ‘uname -n’) “domain” is the internet domain name, e.g., “globes.com”.

To ensure success with FLEXlm across domains, do the following:

1. Make the sure the fully-qualified hostname is the name on the SERVER line of the license file
2. Make sure ALL client nodes, as well as the server node, are able to ‘telnet’ to that fully-qualified hostname. For example, if the host is locally called “speedy”, and the domain name is “corp.com”, local systems will be able to logon to speedy via ‘telnet speedy’. But very often, ‘telnet speedy.corp.com’ will fail, locally. Note that this telnet command will always succeed on hosts in other domains (assuming everything is configured correctly), since the network will resolve speedy.corp.com automatically.
3. Finally, there must be an “alias” for speedy so it’s also known locally as speedy.corp.com. This alias is added to the /etc/hosts file, or if NIS/Yellow Pages are being used, then it will have to be added to the NIS database. This requirement goes away in version 3.0 of FLEXlm.

If all components (application, lmgrd and vendor daemon) are v6.0 or higher, no aliases are required; the only requirement is that the fully-qualified domain name, or ip-address, is used as a hostname on the SERVER, or as a hostname in \$LM_LICENSE_FILE port@host, or @host.

C.3.12 Does FLEXlm work with NIS and DNS?

Yes. However, some sites have broken NIS or DNS, which will cause FLEXlm to fail. In v5 of FLEXlm, NIS and DNS can be avoided to solve this problem. In particular, sometimes DNS is configured for a server that’s not current available (e.g., a dial-up connection from a PC). Again, if DNS is configured, but the server is not available, FLEXlm will fail.

In addition, some systems, particularly Sun, SGI, HP, require that applications be linked dynamically to support NIS or DNS. If a vendor links statically, this can cause the application to fail at a site that uses NIS or DNS. In these situations, the vendor will have to relink, or recompile with v5 FLEXlm (when it becomes available in Q1 of 96). Vendors are strongly encouraged to use dynamic libraries for libc and networking

libraries, since this tends to improve quality in general, as well as making NIS/DNS work.

On PCs, if a checkout seems to take 3 minutes and then fails, this is usually because the system is configured for a dial-up DNS server which is not currently available. The solution here is to turn off DNS.

Finally, hostnames must NOT have periods in the name. These are not legal hostnames, although PCs will allow you to enter them, and they will not work with DNS.

C.3.13 Is the FLEXlm “display” the same as an X-Display?

Not by default. The default FLEXlm display is what is returned by the `ttname()` function call (or the ‘`ty`’ command), and is usually something like “`/dev/tty4`”. However, the application developer can change this default to the X-Display. A paper is available on this topic to FLEXlm developers from GLOBEtrouter Software.

C.3.14 We’re using FLEXlm over a wide-area network. What can we do to improve performance?

FLEXlm network traffic should be minimized. With the most common uses of FLEXlm, traffic is negligible. In particular, checkout, checkin and heartbeats use very little networking traffic. There are two items, however, which can send considerably more data and should be avoided or used sparingly:

- “`lmstat -a`” should be used sparingly. `lmstat -a` should not be used more than, say, once every 15 minutes, and should be particularly avoided when there’s a lot of features, or concurrent users, and therefore a lot of data to transmit; say, more than 20 concurrent users or features.
- prior to FLEXlm v5, the “`port@host`” mode of the `LM_LICENSE_FILE` environment variable should be avoided, especially when the license file has many features, or there are a lot of license files included in `$LM_LICENSE_FILE`. The license file information is sent via the network, and can place a heavy load. Failures due to “`port@host`” will generate the error `LM_SERVNOREADLIC (-61)`.

C.4 Windows Questions

C.4.1 What PC Platforms are supported?

FLEXlm supports Windows 3.1, Windows for Workgroup 3.11, Windows 95, Windows NT 3.5, 3.51 and 4.0 on Intel Mips and Alpha, Netware 3.12 and 4.X, OS/2 3.0.

Networking is required on all 32-bit versions

C.4.2 What is WINSOCKX.DLL

`Winsockx.dll` is a DLL provided by GLOBEtrouter Software that is used by 16 bit applications to interface between FLEXlm and other networking software provided by networking ISV’s. It allows node locked applications to not require networking

software. It also interfaces between winsock.dll for TCP/IP, and the Novell DLLs that provide IPX/SPX on 16 bit operating systems.

C.4.3 Why do I need to include NWlink IPX/SPX on NT and Win 95?

This is necessary for either obtaining the Ethernet card address, or to provide connectivity with a Netware License server.

C.4.4 Will the Server run on Windows 95?

Yes, lmgrd runs in it's own window. If available, NT systems are preferred, since it can be run as an NT "service". Special software to emulate NT services is available from your software vendor.

FLEXlm Error Codes

D.1 Error Message Format

FLEXlm error messages presented by applications have the following components

- FLEXlm Error Number—a negative number starting with -1
- FLEXlm Error Text—short sentence (< 80 characters) summarizing problem.
- FLEXlm Error Explanation (optional)—short paragraph (3-5 lines) explaining problem and possible solutions or workarounds.
- FLEXlm Minor Error Number, a positive number starting with 1. These numbers are unique error identifiers, and are used by FLEXlm-license ISVs for more advanced support assistance. Their meaning is not documented.
- System error code (optional)—This is a Unix or Windows OS error code last set by the operating system.
- System error code explanation (optional)—A short sentence (< 80 characters) explaining the system error code.
- Other supporting information (optional)

Error messages were improved in v6. FLEXlm error explanation, and supporting information are only available in v6.

These error messages may occur in two formats available with FLEXlm, or may appear in a format customized by the application:

D.1.1 Format 1 (short):

```
FLEXlm error text (-lm_errno, minor_num[:sys_errno]) [sys error text]
```

The system error information may be missing.

Example:

```
Can't connect to license server (-15,12:61) Connection refused
```

D.1.2 Format 2 (long—new in v6):

```
FLEXlm error text
FLEXlm error explanation
[Optional Supporting information]
FLEXlm error: -lm_errno, minor_num[, sys_errno] ["system error text"]
```

Example:

```

Cannot connect to license server
  The server (lmgrd) has not been started yet, or
  the wrong port@host or license file is being used, or the
  port or hostname in the license file has been changed.
Feature:      f1
Server name:  localhost
License path: @localhost:license.dat:/*.lic
FLEXlm error: -15,12. System Error: 61 "Connection refused"

```

D.2 Error Code Descriptions

Errors marked with an ‘*’ indicates errors which should not appear in shipping software. These are errors intended to help the programmer incorporate FLEXlm in their product, and should be fixed before shipping.

Errors marked with ‘+’ indicate errors due to an operating system failure.

Error	Description
-1	Cannot find license file
-2	Invalid license file syntax
-3	No server for this feature
-4	Licensed number of users already reached
-5	No such feature exists
-6	No port number in license file and FLEXlm service does not exist [pre-v6 only]
-7	No socket connection to license manager server
-8	Invalid (inconsistent) license key. The license-key and data for the feature do no match. This usually happens when a license file has been altered
-9	Invalid host. The hostid of this system does not match the hostid specified in the license file
-10	Feature has expired
-11	Invalid date format in license file
-12	Invalid returned data from license server
-13	No SERVER lines in license file
-14	Cannot find SERVER hostname in network database. The lookup for the hostname on the SERVER line in the license file failed. This often happens when NIS or DNS or the hosts file is incorrect. Workaround: Use IP-Address (e.g., 123.456.789.123) instead of hostname

- 15 Cannot connect to license server.
The server (lmgrd) has not been started yet, or the wrong port@host or license file is being used, or the port or hostname in the license file has been changed.
- 16 Cannot read data from license server
- 17 Cannot write data to license server
- 18 License server does not support this feature
- 19 Error in select system call
- 20 [Obsolete]
- 21 License file does not support this version
- 22 Feature checkin failure detected at license server
- 23 License server temporarily busy (new server connecting)
- 24 Users are queued for this feature
- 25 License server does not support this version of this feature
- 26 Request for more licenses than this feature supports
- 27 [Obsolete]
- 28 [Obsolete]
- 29 Cannot find ethernet device
- 30 Cannot read license file
- 31 Feature start date is in the future
- 32 No such attribute
- 33 Bad encryption handshake with daemon
- 34 Clock difference too large between client and server
- 35 In the queue for this feature
- 36 Feature database corrupted in daemon
- 37 Duplicate selection mismatch for this feature
- 38 User/host on EXCLUDE list for feature
- 39 User/host not on INCLUDE list for feature
- 40 Cannot allocate dynamic memory
- 41 Feature was never checked out
- 42 Invalid parameter
- 43 *No FLEXlm key data supplied in initializing call
- 44 *Invalid FLEXlm key data supplied
- 45 *FLEXlm function not available in this version
- 46 [Obsolete]

- 47 Clock setting check not available in daemon
- 48 *FLEXlm platform not enabled
- 49 *Date invalid for binary format
- 50 *FLEXlm key data has expired
- 51 *FLEXlm not initialized
- 52 FLEXlm vendor daemon did not respond within timeout interval
- 53 Checkout request rejected by vendor-defined checkout filter
- 54 No FEATURESET line in license file
- 55 Incorrect FEATURESET line in license file
- 56 Cannot compute FEATURESET data from license file
- 57 +socket() call failed
- 58 [Obsolete]
- 59 Message checksum failure
- 60 Server message checksum failure
- 61 Cannot read license file data from server
- 62 Network software (tcp/ip) not available
- 63 You are not a license administrator
- 64 lmremove request before the minimum lmremove interval
- 65 *Unknown VENDORCODE struct type passed to lm_init()
- 66 *FLEXlm include file/library version mismatch
- 67 [Obsolete]
- 68 [Obsolete]
- 69 [Obsolete]
- 70 [Obsolete]
- 71 Invalid TZ environment variable
- 72 *Old VENDORCODE (3-word) struct type passed to lm_init()
- 73 Local checkout filter rejected request
- 74 Attempt to read beyond end of license file path
- 75 +SYS\$SETIMR call failed (VMS)
- 76 Internal FLEXlm Error - Please report to Globetrotter Software
- 77 Bad version number - must be floating point number, with no letters
- 78 *FLEXadmin API functions not available
- 79 FLEXlm internal error -79
- 80 FLEXlm internal error -80
- 81 FLEXlm internal error -81

- 82 Invalid PACKAGE line in license file
- 83 FLEXlm version of client newer than server
- 84 USER_BASED license has no specified users -- see server log
- 85 License server doesn't support this request
- 86 License object already in use (Java only)
- 87 Checkout exceeds MAX specified in options file
- 88 System clock has been set back
- 89 This platform not authorized by license
- 90 Future license file format or misspelling in license file.
The file was issued for a later version of FLEXlm than this program understands.
- 91 ENCRYPTION_SEEDs are non-unique
- 92 feature removed during lmreread, or wrong SERVER line hostid
- 93 This feature is available in a different license pool.
This is a warning condition. The server has pooled one or more INCREMENT lines into a single pool, and the request was made on an INCREMENT line that has been pooled.
- 94 Attempt to generate license with incompatible attributes
- 95 Network connect to THIS_HOST failed.
The license file indicates THIS_HOST, and the server is not running on this host. If it's running on a different host, THIS_HOST should be changed to the correct host.
- 96 Server node is down or not responding.
See the system administrator about starting the server, or make sure the you're referring to the right host (see LM_LICENSE_FILE).
- 97 The desired vendor daemon is down.
1) Check the lmgrd log file, or 2) Try lmreread.
- 98 This FEATURE line can't be converted to decimal format
- 99 The decimal format license is typed incorrectly
- 100 Cannot remove a linger license
- 101 All licenses are reserved for others.
The system administrator has reserved all the licenses for others. Reservations are made in the options file. The server must be restarted for options file changes to take effect.

D

FLEXlm Error Codes

The Debug Log File

The daemons all generate debug log files in the following format.

hh:mm (DAEMON NAME) message

where:	is the:
hh:mm	Time that the message was logged.
DAEMON NAME	Either <code>lmgrd</code> or the vendor DAEMON name. In the case where a single copy of the daemon cannot handle all of the requested licenses, an optional “_” followed by a number indicates that this message comes from a forked daemon.
message	The text of the message.

The debug log files can be used to:

- Diagnose configuration problems.
- Diagnose daemon software errors.

Note—The debug log file should not be used for usage reporting.

E.1 Informational Messages

Connected to node

This daemon is connected to its peer on node “node.”

CONNECTED, master is name

The license daemons log this message when a quorum is up and everyone has selected a master.

DENIED: N feature to user

“user” was denied access to “N” licenses of “feature”.

EXITING DUE TO SIGNAL nnn

EXITING with code nnn

All daemons list the reason that the daemon has exited.

EXPIRED: feature

“feature” has passed its expiration date.

IN: feature by user (N licenses)

“user” has checked back in “N” licenses of “feature”.

License Manager server started

The license daemon was started.

Lost connection to host

A daemon can no longer communicate with its peer on node “host”, which can cause the clients to have to reconnect, or cause the number of daemons to go below the minimum number, in which case clients may start exiting. If the license daemons lose the connection to the master, they will kill all the vendor daemons; vendor daemons will shut themselves down.

Lost quorum

The daemon lost quorum, so will process only connection requests from other daemons.

MULTIPLE xxx servers running.**Please kill, and restart license daemon**

The license daemon has detected that multiple licenses for vendor daemon “xxx” are running. The user should kill all “xxx” daemon processes and re-start the license daemon.

OUT: feature by user (N licenses)

“user” has checked out “N” licenses of “feature”.

RESERVE feature for HOST name**RESERVE feature for USER name**

A license of “feature” is reserved for either user “name” or host “name”.

REStarted xxx (internet port nnn)

Vendor daemon “xxx” was restarted at internet port “nnn”.

Retrying socket bind (address in use)

The license servers try to bind their sockets for approximately 6 minutes if they detect “address in use” errors.

Selected (EXISTING) master node.

This license daemon has selected an existing master (node) as the master.

SERVER shutdown requested.

A daemon was requested to shut down via a user-generated kill command.

[NEW] Server started for: feature-list

A new server was started for the features listed.

Shutting down xxx

The license daemon is shutting down the vendor daemon xxx.

SIGCHLD received. Killing child servers.

A vendor daemon logs this message when a shutdown was requested by the license daemon.

Started name

The license daemon logs this message whenever it starts a new vendor daemon.

Trying connection to node

The daemon is attempting a connection to “node”.

E.2 Configuration Problem Messages

hostname: Not a valid server host, exiting

This daemon was run on an invalid hostname.

hostname: Wrong hostid, exiting

The hostid is wrong for “hostname.”

BAD CODE for feature-name

The specified feature name has a bad license key. It was probably typed in wrong, or modified by the end-user.

CANNOT OPEN options file “file”

The options file specified in the license file could not be opened.

license daemon: lost all connections

This message is logged when all the connections to a server are lost, which often indicates a network problem.

lost lock, exiting

Error closing lock file

Unable to re-open lock file

The vendor daemon has a problem with its lock file, usually because of an attempt to run more than one copy of the daemon on a single node. Locate the other daemon that is running via a `ps` command, and kill it with `kill -9`.

NO DAEMON line for daemon

The license file does not contain a “DAEMON” line for “*daemon*.”

No “license” service found

The TCP “license” service did not exist in `/etc/services`.

No features to serve!

A vendor daemon found no features to serve. This could be caused by a corrupted or incorrectly entered license file.

UNSUPPORTED FEATURE request: feature by user

The “user” has requested a feature that this vendor daemon does not support. This can happen for a number of reasons: the license file is bad, the feature has expired, or the daemon is accessing the wrong license file.

Unknown host: hostname

The hostname specified on a “SERVER” line in the license file does not exist in the network database.

NO DAEMON lines, exiting

The license daemon logs this message if there are no DAEMON lines in the license file. Since there are no vendor daemons to start, there is nothing to do.

NO DAEMON line for name

A vendor daemon logs this error if it cannot find its own DAEMON name in the license file.

E.3 Daemon Software Error Messages

No internet port number specified

A vendor daemon was started without an internet port.

read: error message

An error in a “read” system call was detected.

select: message

An error in a select system call was detected. This is usually a sign of a system networking failure.

Server exiting

The server is exiting. This is normally due to an error.

FLEXlm Versions

V1.0—1988

First FLEXlm Release, containing all the basic FLEXlm features.

V1.5—February 1990

First widely-used version including DEMO.

V2.1—March 1991

- Improved TIMEOUT support
- Improved ethernet hostid support

V2.21—November 1991

- Added support for many platforms, and some platform- specific improvements, such as hostid.
- Hostid ANY added

V2.26—March 1992 (Used only by Sun)

- Added license lingering

V2.4—December 1992

- Added “use-all-feature-lines” capability for incremental license distribution.
- Enhanced vendor customization routines.
- Enhanced End-User Options file.
- Added new hostid types: USER, HOSTNAME and DISPLAY
- Added “port@host” to locate license file —down-loads license file from server.

V2.61—March 1993 (Used only by Sun)

- Added INCREMENT and UPGRADE lines to license file

V3.0—May 1994

- INCREMENT and UPGRADE behavior changed and improved
- Added UDP protocol support.
- Added ‘uname -i’ hostid for hp.
- Added ‘multiple jobs,’ for enhanced support of LM_LICENSE_FILE as a license file list.

- New, optional license file format, with “name=value” syntax for optional new features, including: asset_info, ISSUER, and NOTICE, ‘\’ license file continuation character, 2048 character limit per feature

V4.0—December 1994

- Removed use of floating point, for enhanced reliability
- FEATURE line additions: ck (for use with lmcksum), OVERDRAFT, DUP_GROUP, INTERNET hostid
- PACKAGE line
- License Finder
- lmdiag and FLEXLM_DIAGNOSTICS for end-user diagnostics

V4.1—May 1995

- Performance improvements and new platform support.

V4.1—Patch Release 6, October 1995

- PC patch release for Windows 95 with various performance improvements.

V5.0—March 1996

- Improved port@host behavior—client application doesn’t read license file.
- Automatic port@host via USE_SERVER line in license file.
- Hostid lists—lock a feature to several hostids.
- New FEATURE attributes: SN (serial number), USER_BASED, HOST_BASED, MINIMUM, SUPERSEDE, ISSUED (issued date), CAPACITY (charging based on system capacity).
- Optional avoidance of NIS and DNS via IP address instead of hostname.
- Improved REPORTLOG format
- Server, upon startup, notifies of licenses that will expire within 2 weeks.
- Improved end-user options file functionality.
- New FEATURE attributes: SUPERSEDE, ISSUED, USER_BASED, HOST_BASED, SN.

V5.11—February, 1997

- SUPERSEDE lists, PLATFORMS= license attribute,
- new end-user options: MAX, TIMEOUTALL, CPU_USAGE_INTERVAL, CPU_USAGE_DELTA
- Windows control panel added.
- Windows license generator GENLIC added.

V5.12—April, 1997

- Performance improvements and new platform support.

V6.0—September, 1997

- Imgrd can read multiple license files
- FLEX/m license directory support: *.lic automatically used.
- License files require no editing for use at the end-user site.
- Optional path on DAEMON/VENDOR line; \$PATH used.
- Decimal license format, with lminstall utility for typing in licenses.
- Feature lines are shorter, easier to understand and type in.
- PACKAGE lines can be shipped in separate files that never require user editing.
- Default port numbers make SERVER line port number optional.
- Default end-user options file path
- “this_host” hostname supported on SERVER line.
- VENDOR_LICENSE_FILE supported (e.g., “GSI_LICENSE_FILE”).
- @host supported where default port numbers are used.
- Windows only: user prompted for license file or license server name.
- License files are optionally case-insensitive.
- Imdown and Imreread accept -vendor *name* argument.
- lminstall utility.

v6.1—June, 1998

- Performance Improvements.

F

FLEXlm Versions

Index

A

asset_info= 15
ATM 64

C

ck= 16
configuring FLEXlm
 number of server nodes 28
Control Panel 49, 51

D

DAEMON 11
Debug Log File 73
debug log file
 description of content 73
 rotating to save space 26
Decimal format licenses
 lminstall 45
DISPLAY
 End-user options file 33
dist_info= 16
DNS 64
domains 64
DUP_GROUP= 14

E

Error Code Descriptions 68
EXCLUDE 33
 Example 39
EXCLUDEALL 33

F

FEATURE
 in depth 13
 listing users of 48
 overview 2

firewalls 62

FLEXlm Error Codes 67

FLEXlm Versions

 compatibility with different FLEXlm
 versions 61

 description of all previous versions 77

FLEXLM_DIAGNOSTICS 56

H

HOST

 End-user options file 33

HOST_BASED 15

hostid

 determining without *lmhostid* 53

HOSTID= 15

I

INCLUDE 34

 Example 40

INCLUDEALL 34

INCREMENT

 in depth 13

Installing 4

INTERNET

 End-user options file 33

internet

 and FLEXlm 62

ISDN 64

ISSUED= 15

ISSUER= 15

L

license file

 compatibility between different ver-
 sions 22

 DAEMON line 11

- default location 2
- FEATURE line 13
- frequently asked questions 61
- how to combine 21
- INCREMENT line 13
- list, for redundancy and multiple vendors 23
- node locking 19
- overview 2
- PACKAGE line 16
- rereading after an update 47
- SERVER lines 11, 22
- USE_SERVER 12
 - with multiple servers 7, 8
- license file list 23
- license request process
 - overview of 3
- license server
 - how to choose 25
- LINGER 34
- LM_LICENSE_FILE 28
 - License file list 23
 - syntax 9
 - used to reference multiple files 2
- LM_PROJECT 36
- lmcksum 42
- lmdiag 42, 58
 - debugging connectivity problems 58
 - troubleshooting
 - lmdiag 42
 - troubleshooting with 55
- lmdown 43
- lmgrd 7
 - and redundant servers 8
 - compatibility between versions 22
 - debug log file 26
 - overview 7
 - running as root 63
 - shutting down with lmdown 43
 - starting automatically at boot time 5
 - syntax 44
- lmhostid 14, 45
- lminstall 45
- lmremove 46
- lmreread 47
- lmstat 47
- lmstat -a
 - troubleshooting flexlm with 55
- lmswitch 48
- lmswitchr 48
- LMTOOLS 49
- lmver 49
- log file
 - managing 26

M

- MAX 35
- MAX_OVERDRAFT 35
- Multiple License Files 21

N

- network
 - FLEXlm load 63
 - network bandwidth, and FLEXlm 27
- NFS 63
- NIS 64
- node locking
 - mixed with floating 19
- NOLOG 35
- NOTICE= 15
- NT
 - Control Panel 50

O

Options File

Example 38

Options file

overview 5

options file

and Imrread 47

required for HOST_BASED and
USER_BASED 15

specifying on DAEMON line 11

syntax and description 31

usage examples 37

OPTIONS=SUITE 17

OVERDRAFT= 15

P

PACKAGE

syntax 16

R

Redundant Servers

Overview 27

redundant servers

and SERVER line 11

keep separate license file copies 8

selecting server nodes 28

remote disks

guidelines for using 27

REPORTLOG 26, 35

RESERVE 36

S

SERVER lines

combining license files 22

server nodes

deciding number of 28

servers

disk space used 26

sockets used 25

SN= 15

sockets

differences under SCO 25

number used by license server 25

START= 15

subnets 64

SUITE 17

SUPERSEDE 15

T

TIMEOUT 36

TIMEOUTALL 37

Troubleshooting 57

guide 55

troubleshooting

FLEXLM_DIAGNOSTICS 56

lmdiag 58

U

Unix

and Imgrd 63

UPGRADE 18

USE_SERVER 12

USER

End-user options file 33

USER_BASED 15

user_info= 16

V

VENDOR 9

vendor daemon

and redundant servers 8

vendor_info= 16

VENDOR_STRING= 15

W

wide-area network
 performance 65

Windows

 license administration tools 49

Windows 95

 and license server 66

 Control Panel 51

Windows Questions 65

WINSOCKX.DLL 65

X

X-Display 65

Y

year 2000 61